



# EXCLUSIVE LISTING MEDICAL OFFICE CONDO FOR SALE OR LEASE

(856) 985-9522 • ROSECOMMERCIAL.COM

**Willow Ridge Executive Park**  
**750 Route 73 South, Suite 107 & 108, Evesham, NJ**



## Property Description:

### Available:

### Condo Fees:

### Taxes:

### Lease Rate:

### Sale Price:

### Comments:

One Story Medical Office Condo

2,700 +/-SF

\$ 410.17 / Month

\$12,417.38 (2025)

\$24.00 /SF Plus Utilities

\$472,000.00

- Conveniently located on Route 73
- Updated office with waiting/reception, 4 exam rooms and kitchenette and one private entry office with bathroom.
- Many nearby amenities including, restaurants, retail and offices
- Close proximity to Virtua Hospital, Cooper Hospital and Jefferson Healthcare
- Situated minutes from Route 70, I-295

**Michelle Marinello (Ext. 28)**

**[mmarinello@rosecommercial.com](mailto:mmarinello@rosecommercial.com)**

**(856) 985-9522**

**Adam Rose (Ext. 22)**

**[arose@rosecommercial.com](mailto:arose@rosecommercial.com)**

**(856) 985-9522**

Rose Commercial Real Estate is a full service commercial real estate firm, specializing in all facets of the industry ~ representing buyers and sellers, landlords and tenants as well as investors both big and small. Key to our growth is experience combined with in depth understanding of the South Jersey real estate market. But that alone is only a part of the comprehensive service we provide clients. With our unique **CIRCLES FOR SUCCESS** and start-to-finish commitment, we make things happen.

651 Route 73 North, Suite 111 • Marlton, NJ 08053 • Phone: (856) 985-9522 • Fax: (856) 985-9488

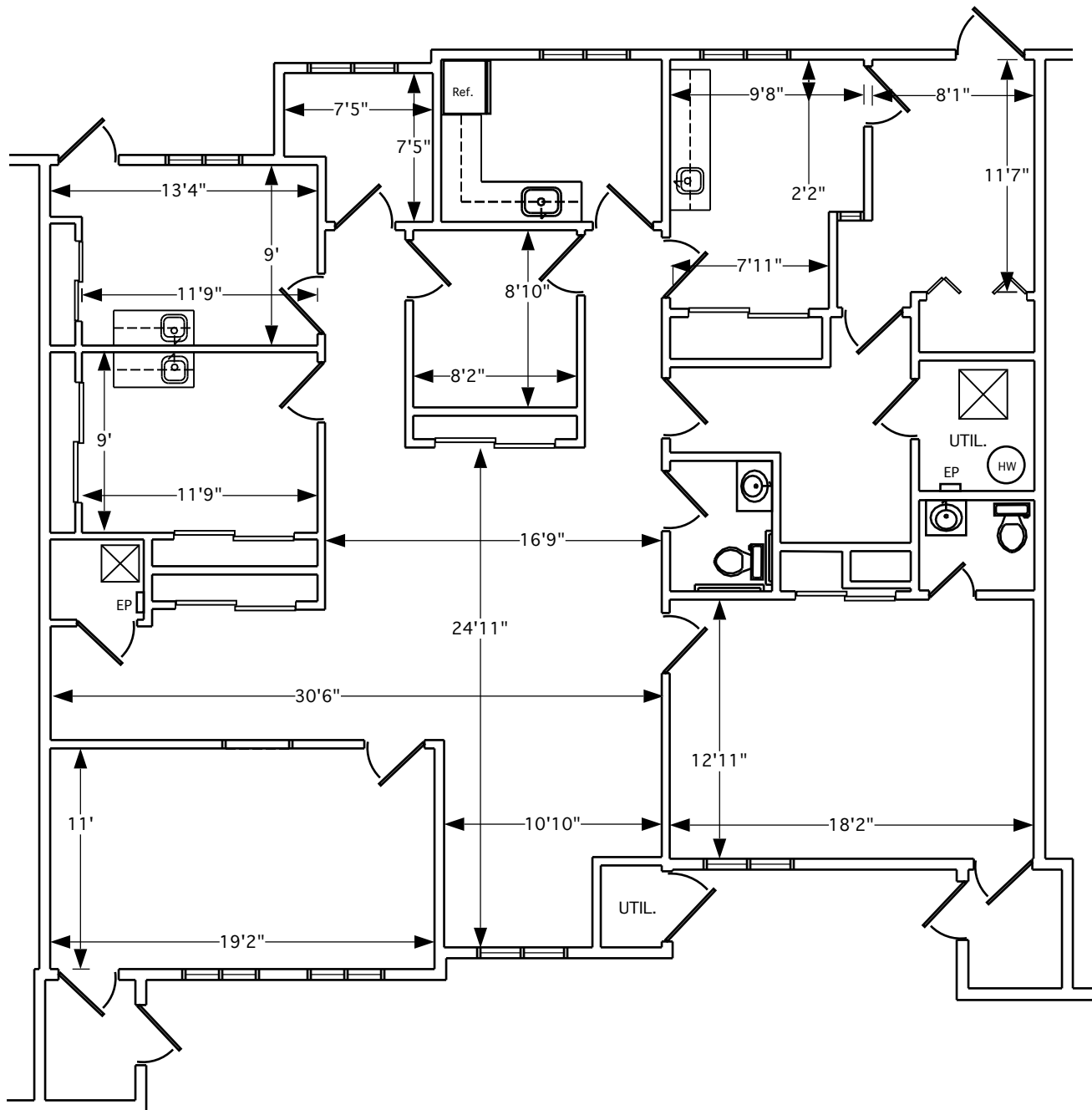
**ROSECOMMERCIAL.COM**



# MEDICAL OFFICE CONDO FOR SALE OR LEASE

(856) 985-9522 • ROSECOMMERCIAL.COM

## FLOOR PLANS



### SUITE 107-108

651 Route 73 North, Suite 111 • Marlton, NJ 08053 • Phone: (856) 985-9522 • Fax: (856) 985-9488

ROSECOMMERCIAL.COM



EXCLUSIVE LISTING  
MEDICAL OFFICE CONDO  
FOR SALE OR LEASE  
(856) 985-9522 • ROSECOMMERCIAL.COM

