



EXCLUSIVE LISTING PROFESSIONAL/ MEDICAL OFFICE CONDO

(856) 985-9522 • ROSECOMMERCIAL.COM

THE PAVILIONS OF VOORHEES 2301 E. Evesham Road Units 110-111, Voorhees, NJ



Property Description:

Professional / Medical Office Condo

Size:

2,000 +/- SF

Condo Fee:

\$759.20/ Month

Taxes:

\$6,295.20 (2024)

Sale Price:

\$290,000.00

Comments:

- Well Maintained office condo
- Rare double unit with many upgrades.
- Multiple larger offices in combination with smaller private rooms, waiting/ conference area
- Ample parking
- Easy access and central location to Cherry Hill, Voorhees and Marlton

Michelle Marinello (Ext. 28)

mmarinello@rosecommercial.com

(856) 985-9522

Adam Rose (Ext. 22)

arose@rosecommercial.com

(856) 985-9522

Rose Commercial Real Estate is a full service commercial real estate firm, specializing in all facets of the industry ~ representing buyers and sellers, landlords and tenants as well as investors both big and small. Key to our growth is experience combined with in depth understanding of the South Jersey real estate market. But that alone is only a part of the comprehensive service we provide clients. With our unique **CIRCLES FOR SUCCESS** and start-to-finish commitment, we make things happen.



EXCLUSIVE LISTING
PROFESSIONAL / MEDICAL OFFICE CONDO
FOR SALE

(856) 985-9522 • ROSECOMMERCIAL.COM



651 Route 73 North, Suite 111 • Marlton, NJ 08053 • Phone: (856) 985-9522 • Fax: (856) 985-9488

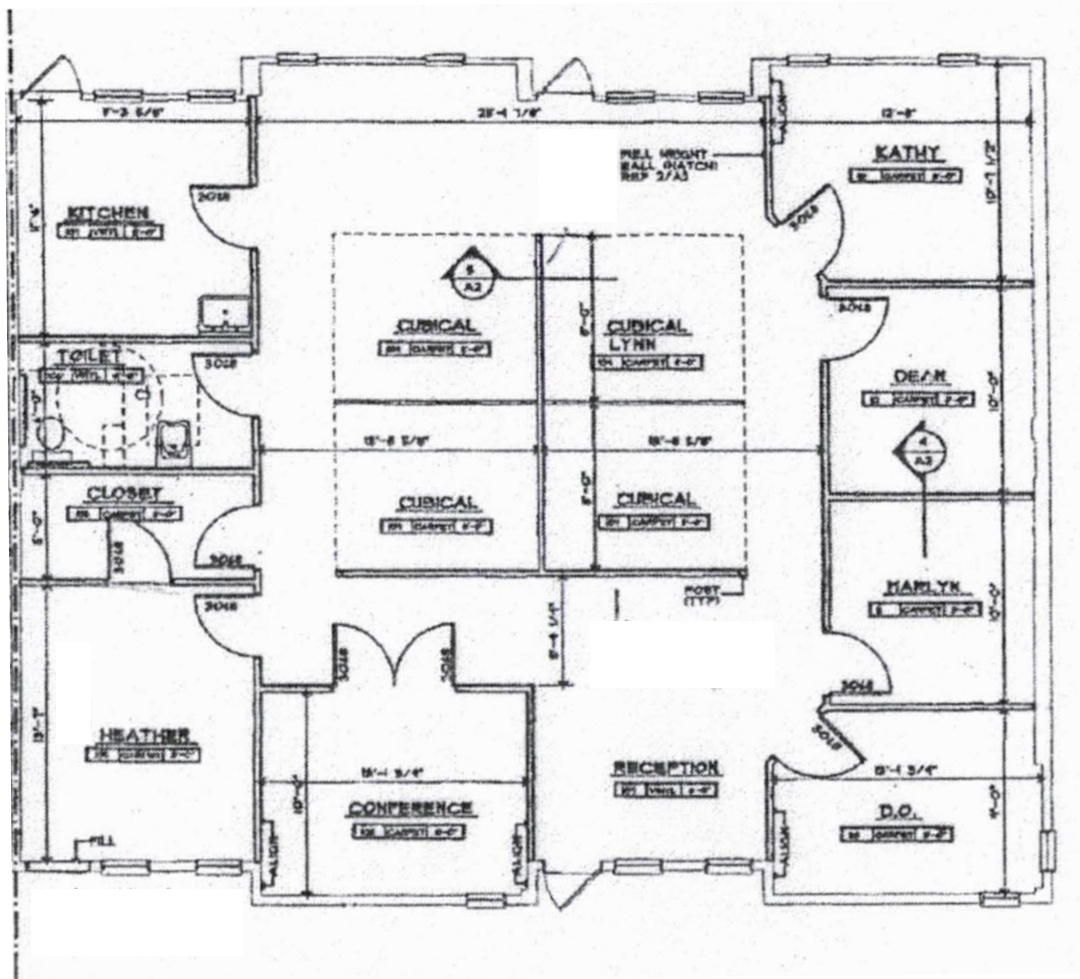
ROSECOMMERCIAL.COM

EXCLUSIVE LISTING
PROFESSIONAL / MEDICAL OFFICE CONDO
FOR SALE

(856) 985-9522 • ROSECOMMERCIAL.COM



FLOOR PLANS





FLOOR PLANS

