



EXCLUSIVE LISTING PROFESSIONAL OFFICE CONDO FOR SALE

(856) 985-9522 • ROSECOMMERCIAL.COM

300 Sheppard Road, Voorhees, NJ



Property Description:

Professional Office Condo

Size:

1,238 +/- SF

Condo Fee:

\$445.00/ Month

Taxes:

\$4,396.14 (2023)

Sale Price:

\$249,000.00

Comments:

- Ideal for all professional uses
- Suite has many upgrades throughout
- Private entry to waiting & reception area, kitchenette/lab area with 3 spacious offices
- End unit with windowed offices
- Central to Voorhees, Marlton, Cherry Hill and Berlin

Brett Davidoff (Ext. 27)

bdavidoff@rosecommercial.com

(856) 985-9522

Michelle Marinello (Ext. 28)

mmarinello@rosecommercial.com

(856) 985-9522

Rose Commercial Real Estate is a full service commercial real estate firm, specializing in all facets of the industry ~ representing buyers and sellers, landlords and tenants as well as investors both big and small. Key to our growth is experience combined with in depth understanding of the South Jersey real estate market. But that alone is only a part of the comprehensive service we provide clients. With our unique **CIRCLES FOR SUCCESS** and start-to-finish commitment, we make things happen.

651 Route 73 North, Suite 111 • Marlton, NJ 08053 • Phone: (856) 985-9522 • Fax: (856) 985-9488

ROSECOMMERCIAL.COM

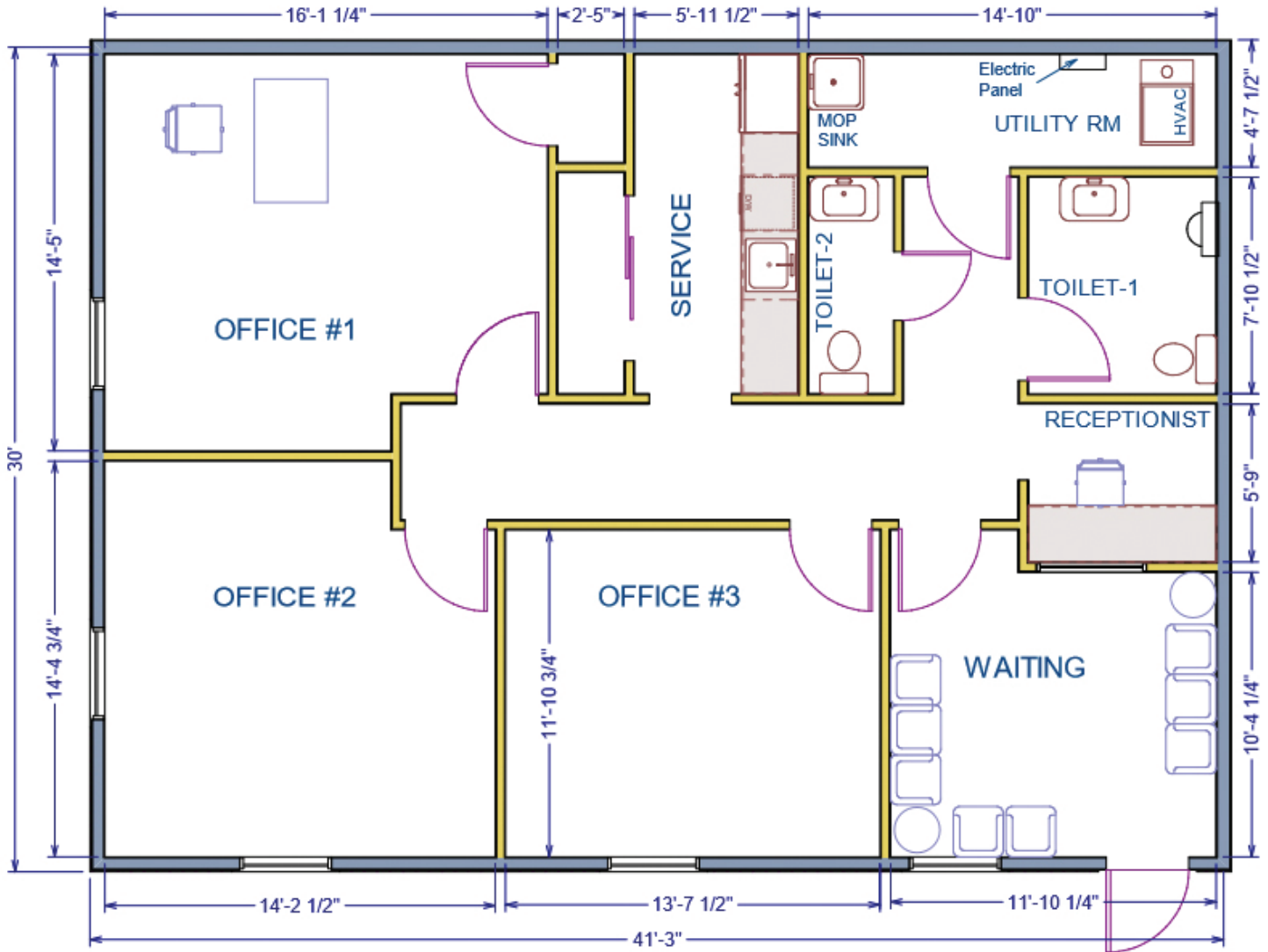


EXCLUSIVE LISTING
PROFESSIONAL OFFICE CONDO
FOR SALE

(856) 985-9522 • ROSECOMMERCIAL.COM

300 Sheppard Road, Voorhees, NJ

FLOOR PLAN





EXCLUSIVE LISTING
PROFESSIONAL OFFICE CONDO
FOR SALE

(856) 985-9522 • ROSECOMMERCIAL.COM



651 Route 73 North, Suite 111 • Marlton, NJ 08053 • Phone: (856) 985-9522 • Fax: (856) 985-9488

ROSECOMMERCIAL.COM