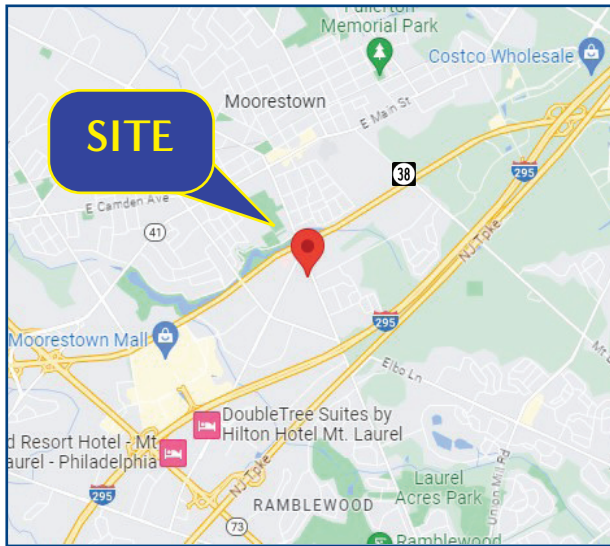
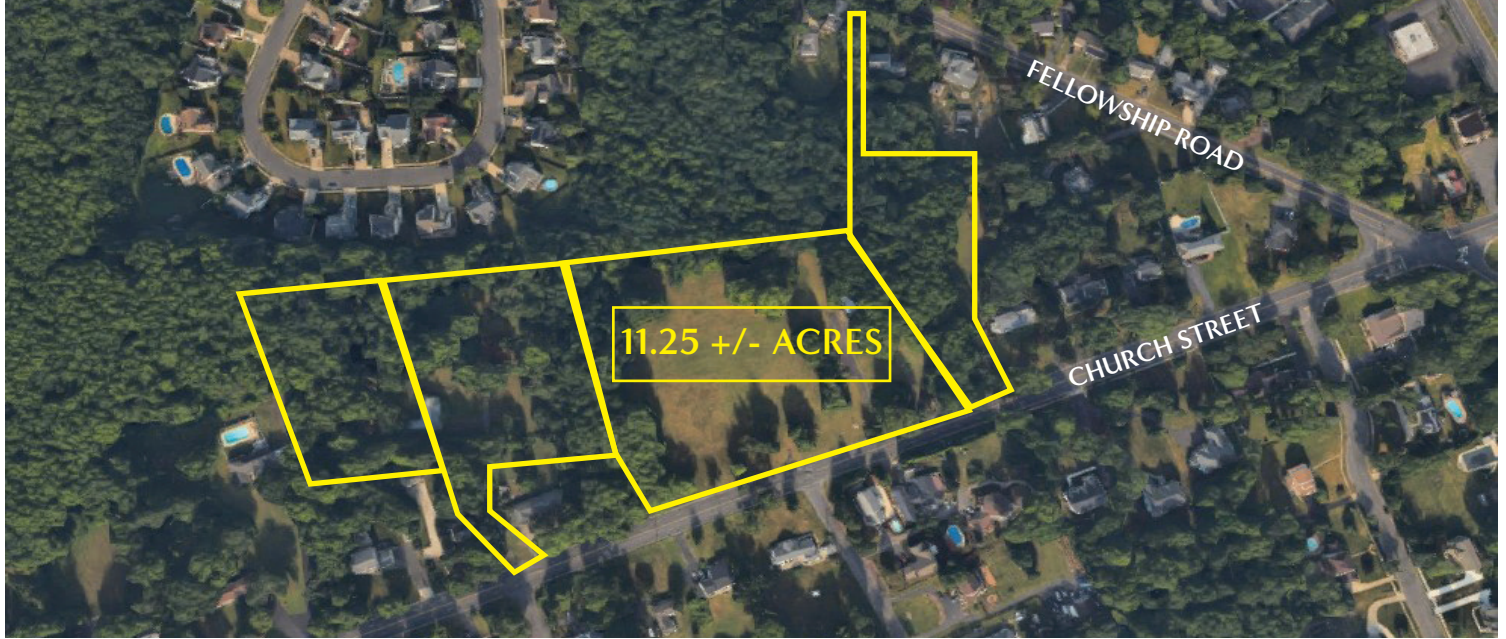




# EXCLUSIVE LISTING REDEVELOPMENT OPPORTUNITY FOR SALE

(856) 985-9522 • ROSECOMMERCIAL.COM

## 600-610 CHURCH STREET, MOORESTOWN & MOUNT LAUREL, NJ



**Property Description:** Land for Sale in Moorestown & Mount Laurel  
**Size:** 11.25 +/- Acres (4 lots)  
**Zoning:** Residential  
**Sale Price:** Call for Information  
**Comments**

- Situated on heavily traveled Church Street
- Ideal location for redevelopment / change of use to Assisted Living or Stage of Life Care
- Close proximity to retail centers such as Moorestown Mall and Centerton Square with Wegmans, Target, Costco and many more

**Ira Taylor**

**itaylor@rosecommercial.com**  
**Office:(856) 985-9522 (ext. 34)**  
**Cell:(856) 296-6550**

Rose Commercial Real Estate is a full service commercial real estate firm, specializing in all facets of the industry - representing buyers and sellers, landlords and tenants as well as investors both big and small. Key to our growth is experience combined with in depth understanding of the South Jersey real estate market. But that alone is only a part of the comprehensive service we provide clients. With our unique CIRCLES FOR SUCCESS and start-to-finish commitment, we make things happen.

651 Route 73 North, Suite 111 • Marlton, NJ 08053 • Phone: (856) 985-9522 • Fax: (856) 985-9488

**ROSECOMMERCIAL.COM**