



EXCLUSIVE LISTING PROFESSIONAL OFFICE CONDO FOR SALE

(856) 985-9522 • ROSECOMMERCIAL.COM

2301 EAST EVESHAM ROAD, SUITE 204, VOORHEES, NJ



Property Description:

One-story office condo

Size:

1,005 +/- SF

Condo Fees:

\$316.33/ month

Taxes:

\$4,712.87 (2023)

Sale Price:

\$145,000.00

Comments:

- Ideal for all professional office use
- Unit is well maintained with high end finishes, including interior french doors and recently replaced HVAC (2021)
- Sale includes all furniture, security cameras and alarm system.
- Central location to Cherry Hill and Voorhees NJ
- Easy access with direct entry

Brett Davidoff (Ext. 27)

bdavidoff@rosecommercial.com

(856) 985-9522

Michelle Marinello (Ext. 28)

mmarinello@rosecommercial.com

(856) 985-9522

Rose Commercial Real Estate is a full service commercial real estate firm, specializing in all facets of the industry ~ representing buyers and sellers, landlords and tenants as well as investors both big and small. Key to our growth is experience combined with in depth understanding of the South Jersey real estate market. But that alone is only a part of the comprehensive service we provide clients. With our unique **CIRCLES FOR SUCCESS** and start-to-finish commitment, we make things happen.

651 Route 73 North, Suite 111 • Marlton, NJ 08053 • Phone: (856) 985-9522 • Fax: (856) 985-9488

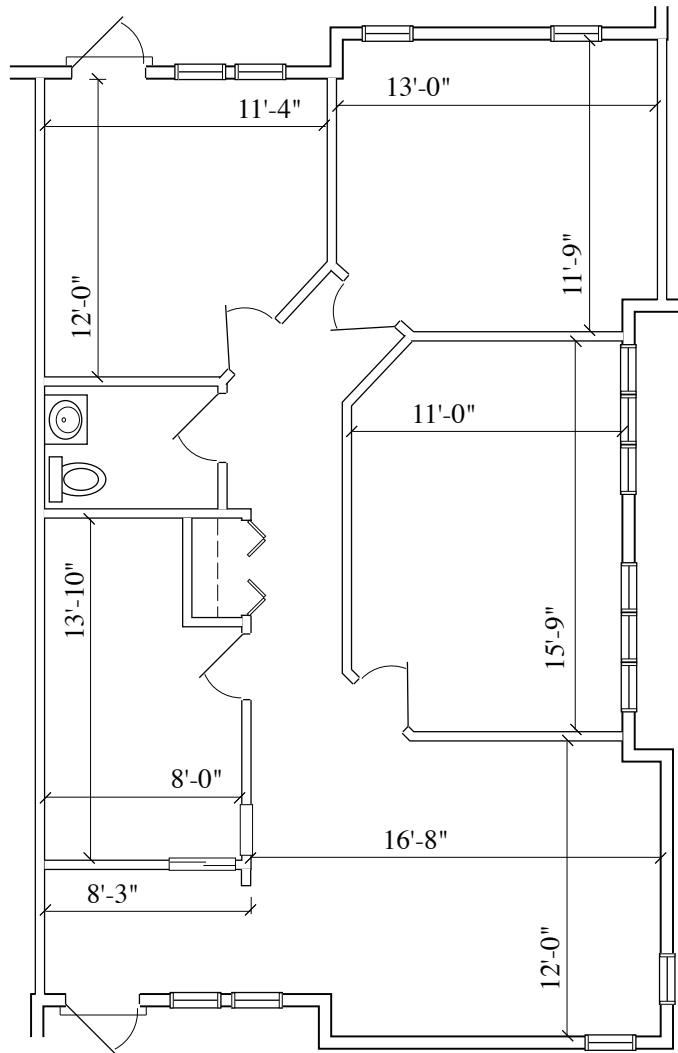
ROSECOMMERCIAL.COM



EXCLUSIVE LISTING
OFFICE CONDO
FOR SALE

(856) 985-9522 • ROSECOMMERCIAL.COM

2301 EAST EVESHAM ROAD, SUITE 204, VOORHEES, NJ



SUITE 204
1,005 SQ/FT