



# EXCLUSIVE LISTING MEDICAL CONDO FOR SALE OR LEASE

(856) 985-9522 • ROSECOMMERCIAL.COM

2301 EAST EVESHAM ROAD, SUITE 504, VOORHEES, NJ



#### Property Description:

One-story medical office condo

#### Size:

1,490 +/- SF

#### Condo Fee:

\$474.50

#### Taxes:

\$7,119.98 (2023)

#### Lease Rate:

\$21.00/SF Gross

#### Sale Price:

Call for Information

#### Comments:

- Ideal for medical professionals
- Condo includes: Four exam rooms, two private offices two bathrooms, reception large waiting room, storage and kitchenette/ lab.
- Central location to both Cherry Hill and Voorhees

**Brett Davidoff (Ext. 27)**

**bdavdioff@rosecommercial.com**

**(856) 985-9522**

Rose Commercial Real Estate is a full service commercial real estate firm, specializing in all facets of the industry ~ representing buyers and sellers, landlords and tenants as well as investors both big and small. Key to our growth is experience combined with in depth understanding of the South Jersey real estate market. But that alone is only a part of the comprehensive service we provide clients. With our unique **CIRCLES FOR SUCCESS** and start-to-finish commitment, we make things happen.

651 Route 73 North, Suite 111 • Marlton, NJ 08053 • Phone: (856) 985-9522 • Fax: (856) 985-9488

**ROSECOMMERCIAL.COM**

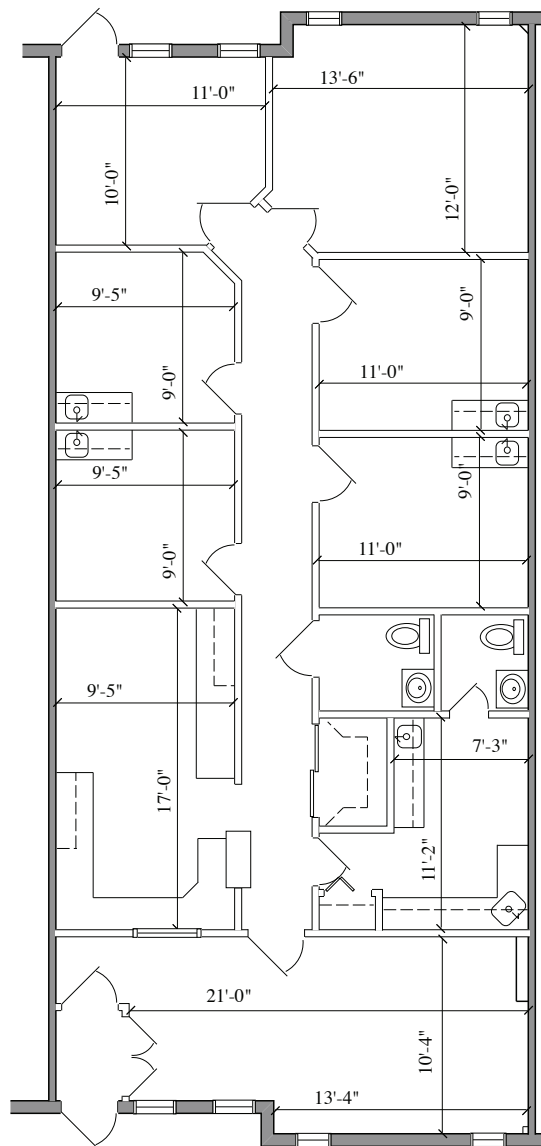


EXCLUSIVE LISTING  
MEDICAL CONDO  
FOR SALE OR LEASE

(856) 985-9522 • ROSECOMMERCIAL.COM

2301 EAST EVESHAM ROAD, SUITE 504, VOORHEES, NJ  
FLOOR PLAN

UNIT 504  
1,490 SQ. FT.



651 Route 73 North, Suite 111 • Marlton, NJ 08053 • Phone: (856) 985-9522 • Fax: (856) 985-9488

ROSECOMMERCIAL.COM