



EXCLUSIVE LISTING OFFICE CONDO FOR SALE

(856) 985-9522 • ROSECOMMERCIAL.COM

651 ROUTE 73 NORTH, SUITE 307, MARLTON, NJ



Property Description:

Size:

Condo Fee:

Taxes:

Sale Price:

Comments:

Professional Office Condo

1,212 +/- SF

\$343.80/ month

\$4,450.04 (2022)

\$189,900.00

- Single story office condo
- Suite offers cathedral ceilings with skylights and open floor plan, reception, two offices, kitchenette and bathroom
- Ideal for all professional use
- Easy access to Route 70, I-295 and NJ Turnpike

Michelle Marinello (Ext. 28)
mmarinello@rosecommercial.com
(856) 985-9522

Rose Commercial Real Estate is a full service commercial real estate firm, specializing in all facets of the industry ~ representing buyers and sellers, landlords and tenants as well as investors both big and small. Key to our growth is experience combined with in depth understanding of the South Jersey real estate market. But that alone is only a part of the comprehensive service we provide clients. With our unique **CIRCLES FOR SUCCESS** and start-to-finish commitment, we make things happen.

651 Route 73 North, Suite 111 • Marlton, NJ 08053 • Phone: (856) 985-9522 • Fax: (856) 985-9488

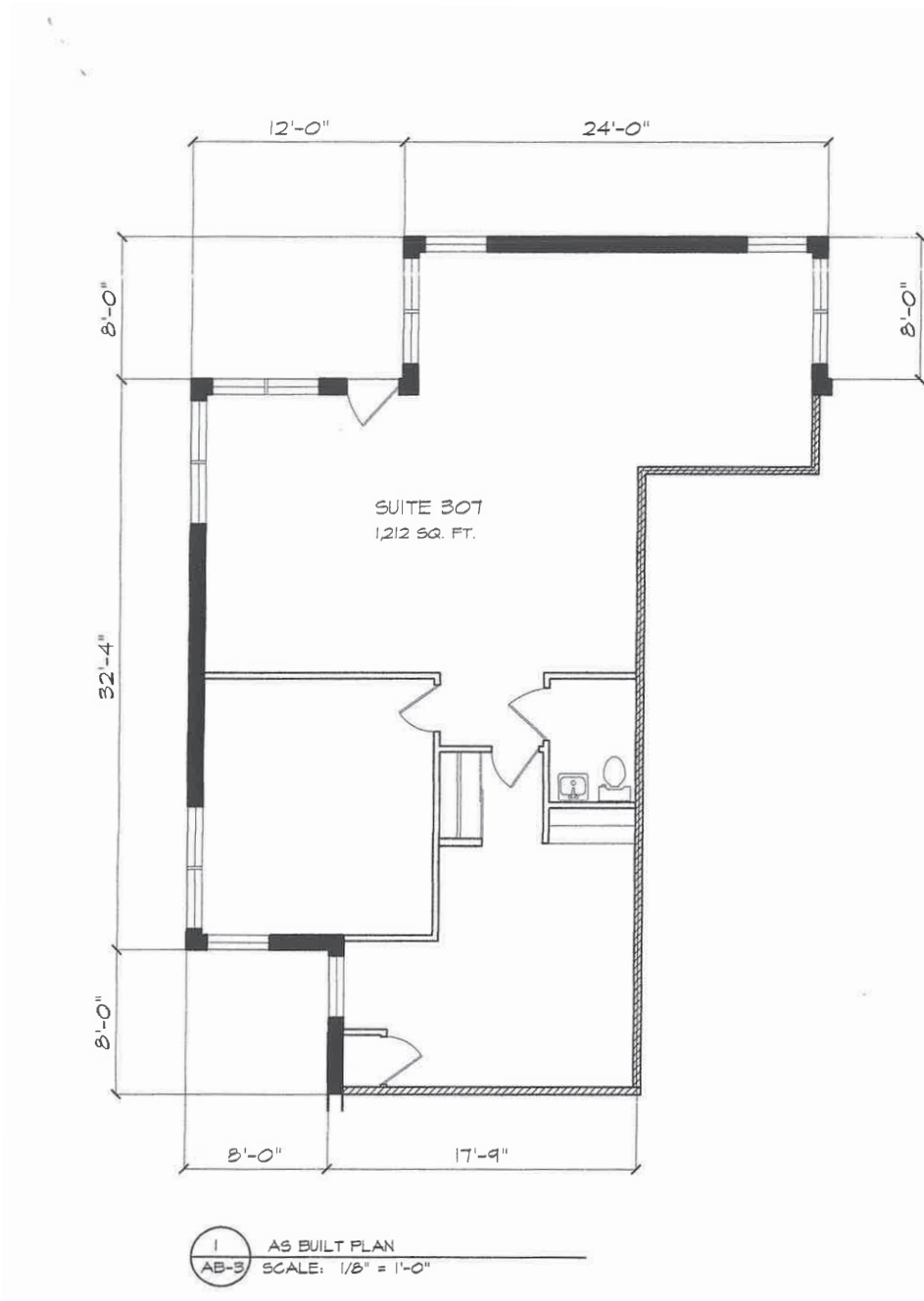
ROSECOMMERCIAL.COM



EXCLUSIVE LISTING OFFICE CONDO FOR SALE

(856) 985-9522 • ROSECOMMERCIAL.COM

FLOOR PLAN



Rose Commercial Real Estate is a full service commercial real estate firm, specializing in all facets of the industry ~ representing buyers and sellers, landlords and tenants as well as investors both big and small. Key to our growth is experience combined with in depth understanding of the South Jersey real estate market. But that alone is only a part of the comprehensive service we provide clients. With our unique **CIRCLES FOR SUCCESS** and start-to-finish commitment, we make things happen.

651 Route 73 North, Suite 111 • Marlton, NJ 08053 • Phone: (856) 985-9522 • Fax: (856) 985-9488

ROSECOMMERCIAL.COM