



FREE STANDING OFFICE CONDO FOR SALE OR LEASE

(856) 985-9522 • ROSECOMMERCIAL.COM

2026 BRIGGS ROAD, BUILDING A, MOUNT LAUREL, NJ



Property Description:

Size:

Class "A" Office Condo

5,040 +/- SF

Available:

4,040 +/- SF Office with 1,000 +/- Flex

Condo Fees:

\$642.00 / month

Taxes:

\$17,383.00

Sale Price:

Call For Information

Lease Rate:

\$21.00/SF Plus Utilities

Comments:

- Prominent signage and exposure
- Meticulously maintained with high end finishes
- 4 conference rooms, 6 offices, kitchen with seating area, lounge with TV reception area, cubical area with 9 desks
- Multiple direct entrances
- Direct access to Route 38, minutes to Route 295

Brett Davidoff

bdavidoff@rosecommercial.com

(856) 985-9522 (Ext. 27)

(609) 320-1145 (Cell)

Rose Commercial Real Estate is a full service commercial real estate firm, specializing in all facets of the industry ~ representing buyers and sellers, landlords and tenants as well as investors both big and small. Key to our growth is experience combined with in depth understanding of the South Jersey real estate market. But that alone is only a part of the comprehensive service we provide clients. With our unique **CIRCLES FOR SUCCESS** and start-to-finish commitment, we make things happen.

651 Route 73 North, Suite 111 • Marlton, NJ 08053 • Phone: (856) 985-9522 • Fax: (856) 985-9488

ROSECOMMERCIAL.COM



FREE STANDING OFFICE CONDO FOR SALE

(856) 985-9522 • ROSECOMMERCIAL.COM

2026A BRIGGS ROAD, MOUNT LAUREL, NJ



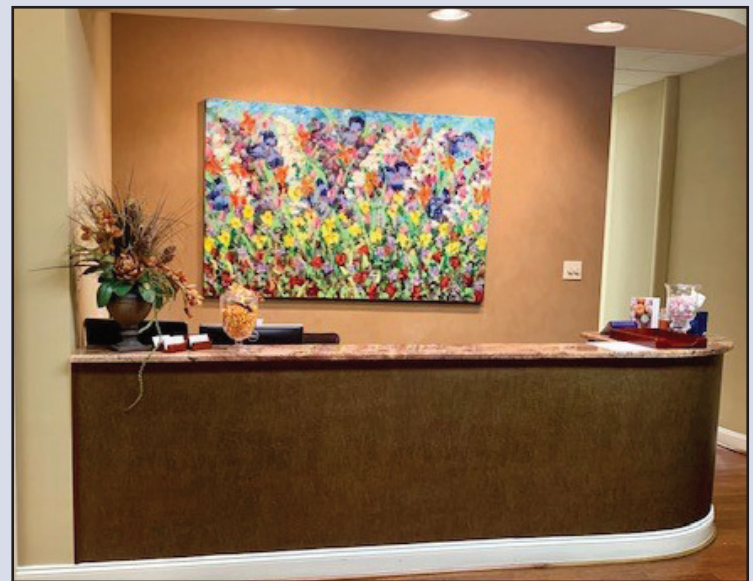
CONFERENCE ROOM



CONFERENCE ROOM



CONFERENCE ROOM



RECEPTION DESK