



# EXCLUSIVE LISTING MEDICAL OFFICE CONDO FOR SALE OR LEASE

(856) 985-9522 • ROSECOMMERCIAL.COM

2301 EAST EVESHAM ROAD, SUITE 306, VOORHEES, NJ



## Property Description:

One-story office condo

## Size:

1,489 +/- SF

## Condo Fees:

\$474.50/ month

## Taxes:

\$6,978.06 (2021)

## Lease Rate:

\$21.00/SF Plus Utilities

## Sale Price:

\$229,000.00

## Comments:

- Ideal for all medical and professional office use
- Directory and suite signage
- Central location to Cherry Hill and Voorhees NJ
- Easy access with direct entry

**Michelle Marinello (Ext. 28)**

**[mmarinello@rosecommercial.com](mailto:mmarinello@rosecommercial.com)**

**(856) 985-9522**

**Brett Davidoff (Ext. 27)**

**[bdavidoff@rosecommercial.com](mailto:bdavidoff@rosecommercial.com)**

**(856) 985-9522**

Rose Commercial Real Estate is a full service commercial real estate firm, specializing in all facets of the industry ~ representing buyers and sellers, landlords and tenants as well as investors both big and small. Key to our growth is experience combined with in depth understanding of the South Jersey real estate market. But that alone is only a part of the comprehensive service we provide clients. With our unique **CIRCLES FOR SUCCESS** and start-to-finish commitment, we make things happen.

651 Route 73 North, Suite 111 • Marlton, NJ 08053 • Phone: (856) 985-9522 • Fax: (856) 985-9488

**ROSECOMMERCIAL.COM**

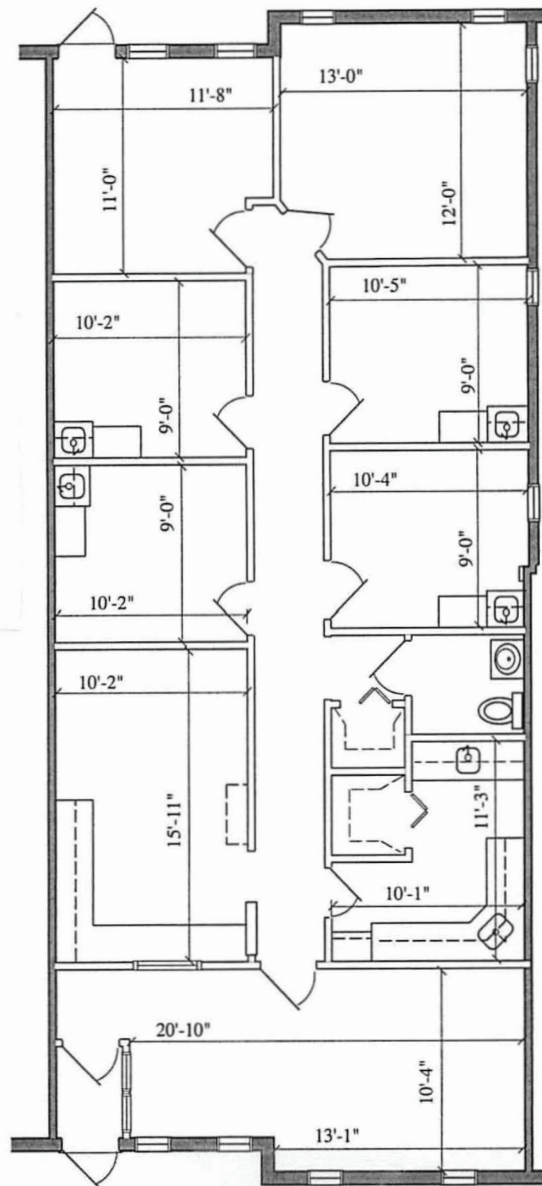


# EXCLUSIVE LISTING MEDICAL OFFICE CONDO FOR SALE OR LEASE

(856) 985-9522 • ROSECOMMERCIAL.COM

2301 EAST EVESHAM ROAD, SUITE 306, VOORHEES, NJ

- 4 Exam rooms with sinks
- 2 Offices/Consult rooms.
- 1 Large Reception Area
- 1 Large Atrium Waiting Room
- 2 Storage Closets
- 1 Bathroom
- 1 Kitchen with 2 sinks
- Front/Rear Entrance
- 11 Windows
- Front entrance of Complex w/ample parking



651 Route 73 North, Suite 111 • Marlton, NJ 08053 • Phone: (856) 985-9522 • Fax: (856) 985-9488

ROSECOMMERCIAL.COM