



EXCLUSIVE LISTING OFFICE SPACE FOR LEASE

(856) 985-9522 • ROSECOMMERCIAL.COM

1998 Springdale Road, Cherry Hill, NJ



Property Description:

One-story office building

Building Size:

14,000 +/- SF

Available:

1,330 +/- SF Unit 1

560 +/- SF Unit 2

1,880 +/- SF Total

Lease Rate:

\$16.00/ SF Plus Utilities

Comments:

- Professional office space centrally located near Greentree and Route 70
- Ample parking
- Monument and building signage
- Easy access to Routes 70 and 73, NJ Turnpike and I-295

Ross Donolow (Ext. 25)
adonolow@rosecommercial.com
(856) 985-9522

Michelle Marinello (Ext. 28)
mmarinello@rosecommercial.com
(856) 985-9522

Rose Commercial Real Estate is a full service commercial real estate firm, specializing in all facets of the industry ~ representing buyers and sellers, landlords and tenants as well as investors both big and small. Key to our growth is experience combined with in depth understanding of the South Jersey real estate market. But that alone is only a part of the comprehensive service we provide clients. With our unique **CIRCLES FOR SUCCESS** and start-to-finish commitment, we make things happen.

651 Route 73 North, Suite 111 • Marlton, NJ 08053 • Phone: (856) 985-9522 • Fax: (856) 985-9488

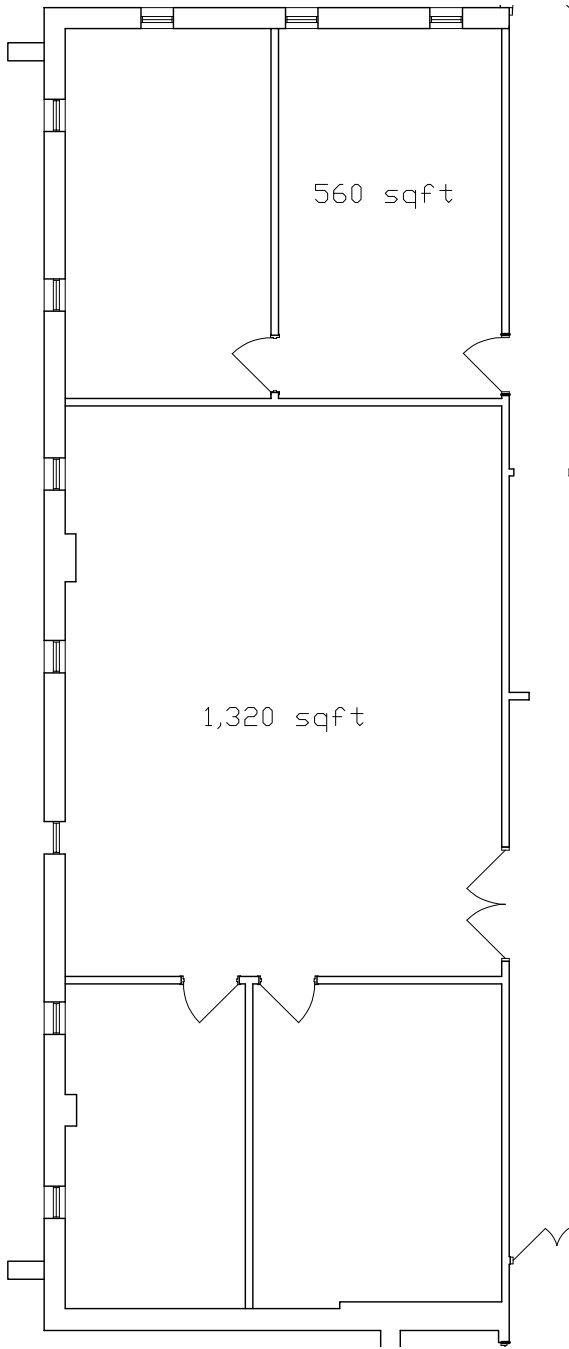
ROSECOMMERCIAL.COM

**EXCLUSIVE LISTING
OFFICE SPACE
FOR LEASE**



(856) 985-9522 • ROSECOMMERCIAL.COM

1998 Springdale Road, Cherry Hill, NJ



651 Route 73 North, Suite 111 • Marlton, NJ 08053 • Phone: (856) 985-9522 • Fax: (856) 985-9488

ROSECOMMERCIAL.COM