



# EXCLUSIVE LISTING MEDICAL CONDO FOR SALE

(856) 985-9522 • ROSECOMMERCIAL.COM

2301 EAST EVESHAM ROAD, SUITE 210, VOORHEES, NJ



#### Property Description:

One-story medical office condo

#### Size:

1,035 +/- SF

#### Condo Fees:

\$ 301.27/ month

#### Taxes:

\$5,987.76 (2020)

#### Sale Price:

\$149,900.00

#### Comments:

- Ideal for medical or professional use
- Unit offers 3- 4 exam rooms, 2-3 private offices, large reception area, waiting room and private bathroom
- Directory and suite signage
- Central location to both Cherry Hill and Voorhees

**Adam Rose (Ext. 22)**

[arose@rosecommercial.com](mailto:arose@rosecommercial.com)

(856) 985-9522

**Michelle Marinello (Ext. 28)**

[mmarinello@rosecommercial.com](mailto:mmarinello@rosecommercial.com)

(856) 985-9522

Rose Commercial Real Estate is a full service commercial real estate firm, specializing in all facets of the industry ~ representing buyers and sellers, landlords and tenants as well as investors both big and small. Key to our growth is experience combined with in depth understanding of the South Jersey real estate market. But that alone is only a part of the comprehensive service we provide clients. With our unique **CIRCLES FOR SUCCESS** and start-to-finish commitment, we make things happen.

651 Route 73 North, Suite 111 • Marlton, NJ 08053 • Phone: (856) 985-9522 • Fax: (856) 985-9488

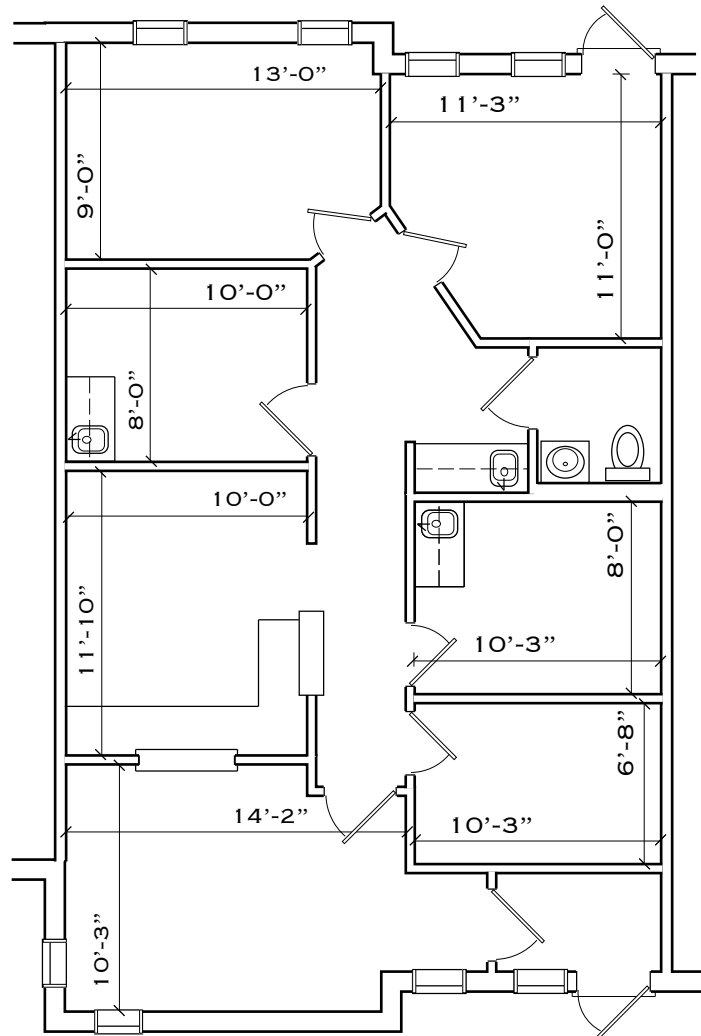
ROSECOMMERCIAL.COM



EXCLUSIVE LISTING  
MEDICAL CONDO  
FOR SALE OR LEASE

(856) 985-9522 • ROSECOMMERCIAL.COM

2301 EAST EVESHAM ROAD, SUITE 210, VOORHEES, NJ  
FLOOR PLAN



UNIT 210  
1,035 SQ. FT.