



OFFICE CONDO FOR SALE

(856) 985-9522 • ROSECOMMERCIAL.COM

1236 Brace Road, Unit A, Cherry Hill, NJ



Property Description:

Size:

Three Story Professional
Office Condo For Sale

Taxes:

4,000 SF

Condo Fees:

\$15,550.71 (2019)

Sale Price:

\$568.00 / month

Comments:

\$400,000.00

- Ideal for any professional use, presently occupied by a law firm
- Prominent signage on Brace Road
- Private parking lot
- Close proximity to Route 70 and Route 295

Adam Rose (Ext. 22)

arose@rosecommercial.com

(856) 985-9522

Brett Davidoff (ext. 27)

bdavidoff@rosecommercial.com

(856) 985-9522

Rose Commercial Real Estate is a full service commercial real estate firm, specializing in all facets of the industry - representing buyers and sellers, landlords and tenants as well as investors both big and small. Key to our growth is experience combined with in depth understanding of the South Jersey real estate market. But that alone is only a part of the comprehensive service we provide clients. With our unique **CIRCLES FOR SUCCESS** and start-to-finish commitment, we make things happen.

651 Route 73 North, Suite 111 • Marlton, NJ 08053 • Phone: (856) 985-9522 • Fax: (856) 985-9488

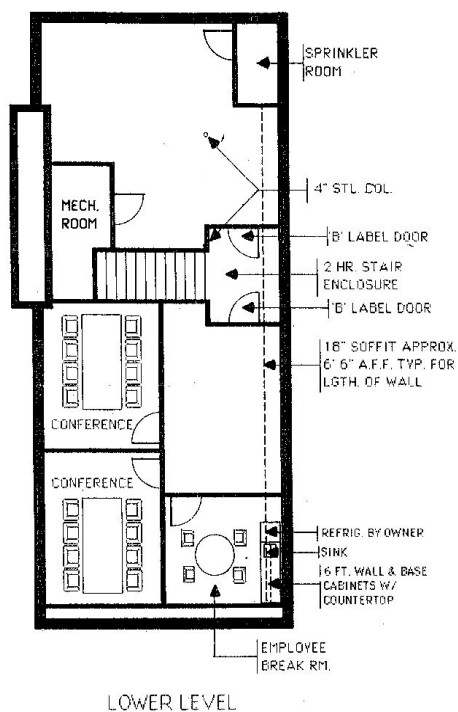
ROSECOMMERCIAL.COM



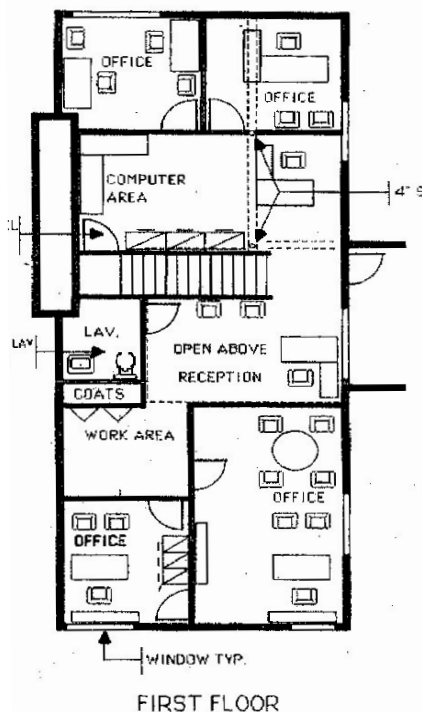
OFFICE CONDO FOR SALE

(856) 985-9522 • ROSECOMMERCIAL.COM

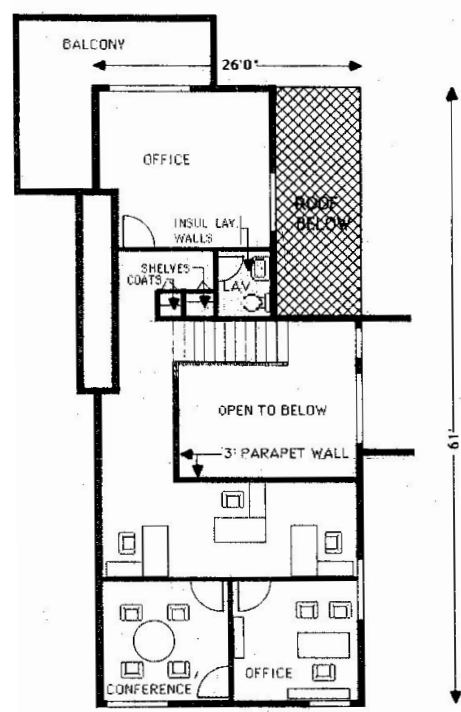
1236 Brace Road, Unit A, Cherry Hill, NJ



LOWER LEVEL



FIRST FLOOR



MEZZANINE