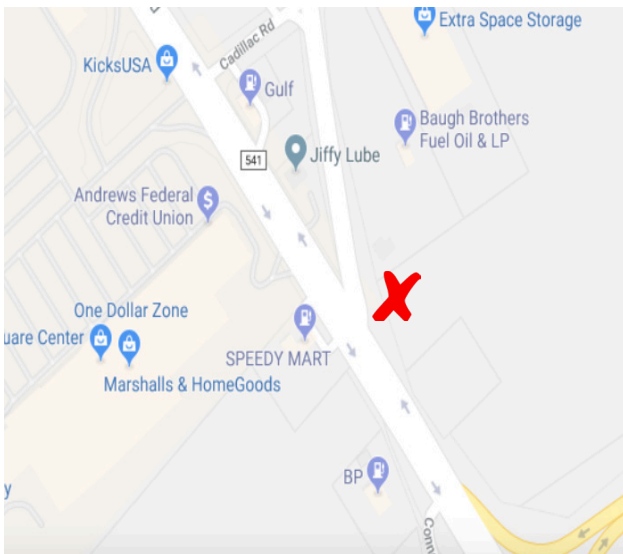
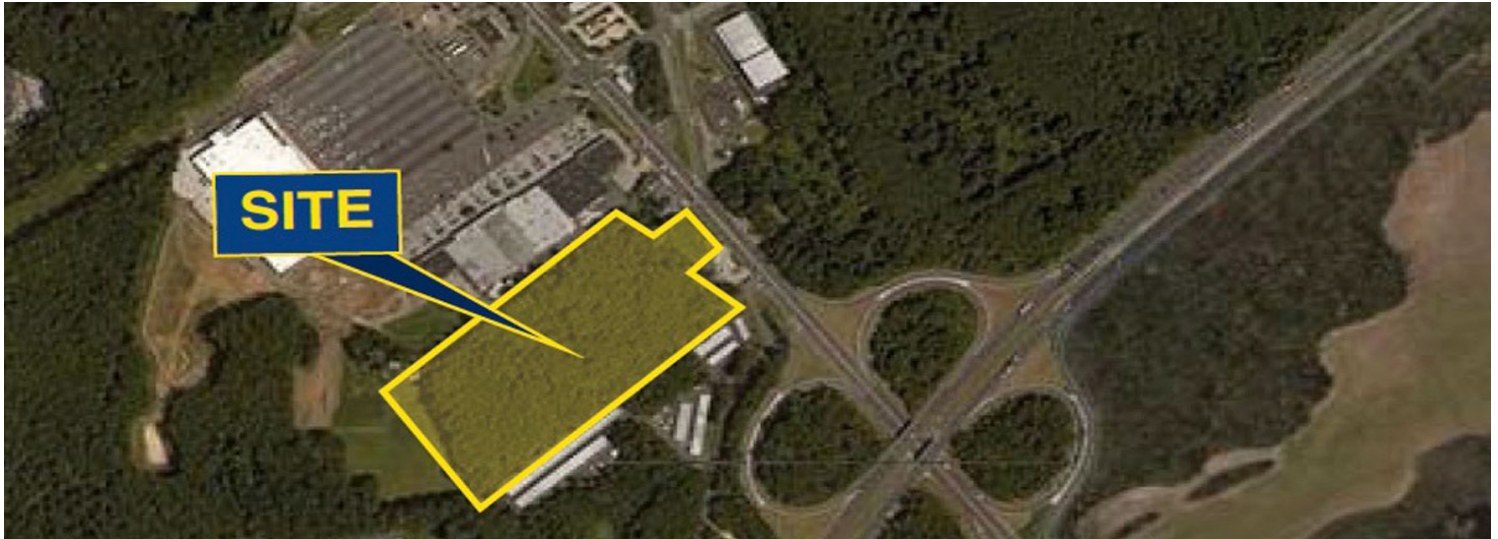




EXCLUSIVE LISTING DEVELOPMENT OPPORTUNITY FOR SALE

(856) 985-9522 • ROSECOMMERCIAL.COM

2214-2216 ROUTE 541, BURLINGTON, NJ



Property Description:

Block Lot:

Development Opportunity

Acres:

119/8

Zoning:

14.52 +/- acres

Taxes:

B-2, Highway- Business

Sale Price:

\$4,550.00

Comments:

\$600,000.00

- Located adjacent to I-295 ramps
- Minutes to the NJ Turnpike
- Possible wetlands/drylands redistribution to suite future development
- Located in retail district with established anchor stores such as Walmart, Kohls, Target, Acme, Regal Theaters and Much more

Jeffrey Lucas (Ext. 32)

jeffreylucas@me.com

(856) 985-9522

Rose Commercial Real Estate is a full service commercial real estate firm, specializing in all facets of the industry ~ representing buyers and sellers, landlords and tenants as well as investors both big and small. Key to our growth is experience combined with in depth understanding of the South Jersey real estate market. But that alone is only a part of the comprehensive service we provide clients. With our unique **CIRCLES FOR SUCCESS** and start-to-finish commitment, we make things happen.

651 Route 73 North, Suite 111 • Marlton, NJ 08053 • Phone: (856) 985-9522 • Fax: (856) 985-9488

ROSECOMMERCIAL.COM



EXCLUSIVE LISTING DEVELOPMENT OPPORTUNITY FOR SALE

(856) 985-9522 • ROSECOMMERCIAL.COM

2214-2216 ROUTE 541, BURLINGTON, NJ



Rose Commercial Real Estate is a full service commercial real estate firm, specializing in all facets of the industry ~ representing buyers and sellers, landlords and tenants as well as investors both big and small. Key to our growth is experience combined with in depth understanding of the South Jersey real estate market. But that alone is only a part of the comprehensive service we provide clients. With our unique **CIRCLES FOR SUCCESS** and start-to-finish commitment, we make things happen.

651 Route 73 North, Suite 111 • Marlton, NJ 08053 • Phone: (856) 985-9522 • Fax: (856) 985-9488

ROSECOMMERCIAL.COM