



# EXCLUSIVE LISTING MEDICAL / DENTAL CONDO FOR SALE OR LEASE

(856) 985-9522 • ROSECOMMERCIAL.COM

2301 EAST EVESHAM ROAD, SUITE 105, VOORHEES, NJ



#### Property Description:

One-story medical/dental office condo

#### Size:

1,473 +/- SF

#### Condo Fees:

\$ 451.91/ month

#### Taxes:

\$8,658.53 (2020)

#### Lease Rate:

\$25.00/ SF plus utilities

#### Sale Price:

~~\$253,000.00~~ \$210,000.00

#### Comments:

- Ideal for all medical / dental professionals
- High end finishes throughout
- New HVAC unit
- Dental equipment is available
- Central location to both Cherry Hill and Voorhees

**Adam Rose (Ext. 22)**

**arose@rosecommercial.com**

**(856) 985-9522**

**Michelle Marinello (Ext. 28)**

**mmarinello@rosecommercial.com**

**(856) 985-9522**

Rose Commercial Real Estate is a full service commercial real estate firm, specializing in all facets of the industry ~ representing buyers and sellers, landlords and tenants as well as investors both big and small. Key to our growth is experience combined with in depth understanding of the South Jersey real estate market. But that alone is only a part of the comprehensive service we provide clients. With our unique **CIRCLES FOR SUCCESS** and start-to-finish commitment, we make things happen.

651 Route 73 North, Suite 111 • Marlton, NJ 08053 • Phone: (856) 985-9522 • Fax: (856) 985-9488

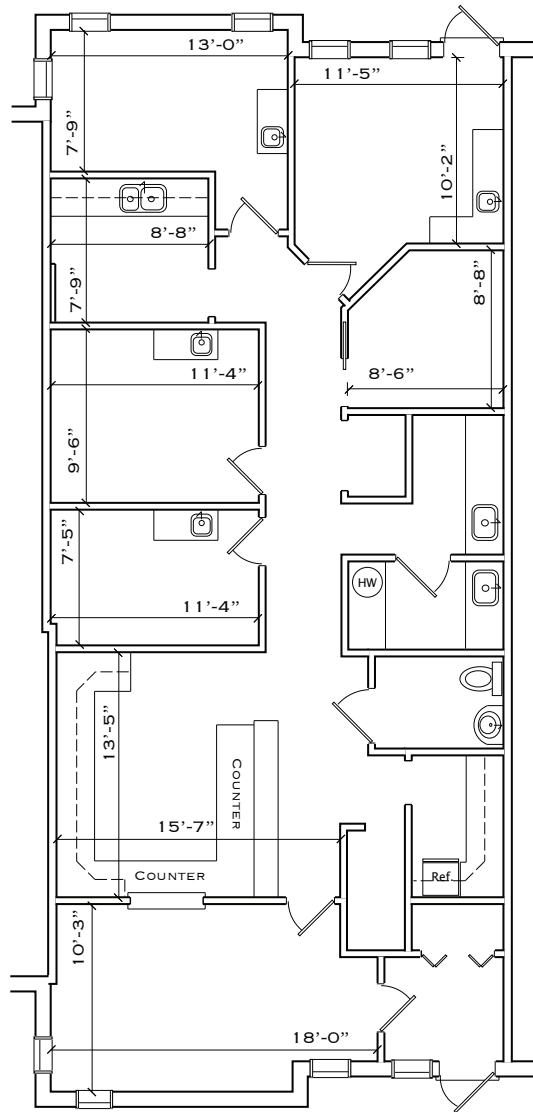
**ROSECOMMERCIAL.COM**

EXCLUSIVE LISTING  
MEDICAL / DENTAL CONDO  
FOR SALE OR LEASE

(856) 985-9522 • ROSECOMMERCIAL.COM



2301 EAST EVESHAM ROAD, SUITE 105, VOORHEES, NJ  
FLOOR PLAN



UNIT 105  
1,473 SQ. FT.