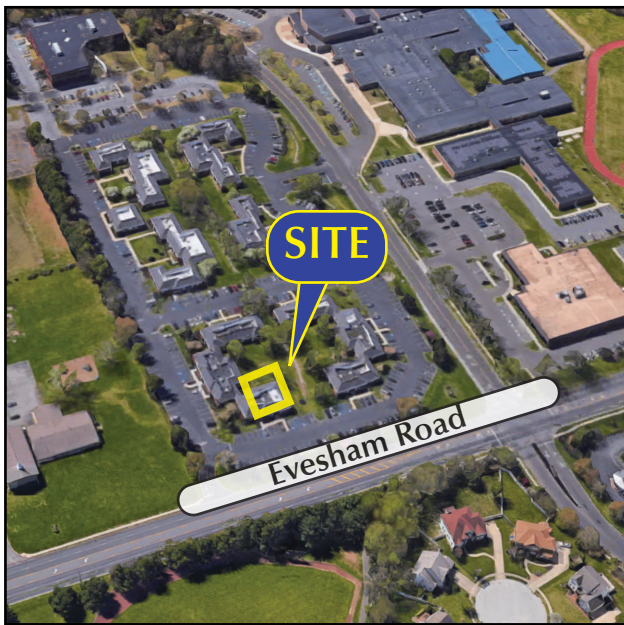




OFFICE / MEDICAL CONDO FOR SALE OR LEASE

(856) 985-9522 • ROSECOMMERCIAL.COM

2301 EAST EVESHAM ROAD, SUITE 202 & 203, VOORHEES, NJ



Property Description:

Size:

One-story medical/office condominium
2,339+/- SF

Condo Fees:

\$677.87/ month

Taxes:

\$ 7,349.66 (2022)

Lease Rate:

\$20.00/ SF plus utilities

Sale Price:

~~\$399,000.00~~ \$349,000.00

Comments:

- Excellent condition, newly renovated interior includes: new flooring, LED lighting, doors, trim, cabinets, counters and paint throughout
- Ideal for all office or medical professionals
- Highly visible location within Pavilions of Voorhees facing Evesham Road
- Rare double unit
- Abundant parking
- Directory and suite signage available

Adam Rose (Ext. 22)

arose@rosecommercial.com

(856) 985-9522

Michelle Marinello (Ext. 28)

mmarinello@rosecommercial.com

(856) 985-9522

Rose Commercial Real Estate is a full service commercial real estate firm, specializing in all facets of the industry ~ representing buyers and sellers, landlords and tenants as well as investors both big and small. Key to our growth is experience combined with in depth understanding of the South Jersey real estate market. But that alone is only a part of the comprehensive service we provide clients. With our unique **CIRCLES FOR SUCCESS** and start-to-finish commitment, we make things happen.



**EXCLUSIVE LISTING
OFFICE / MEDICAL CONDO
FOR SALE OR LEASE**

(856) 985-9522 • ROSECOMMERCIAL.COM



651 Route 73 North, Suite 111 • Marlton, NJ 08053 • Phone: (856) 985-9522 • Fax: (856) 985-9488

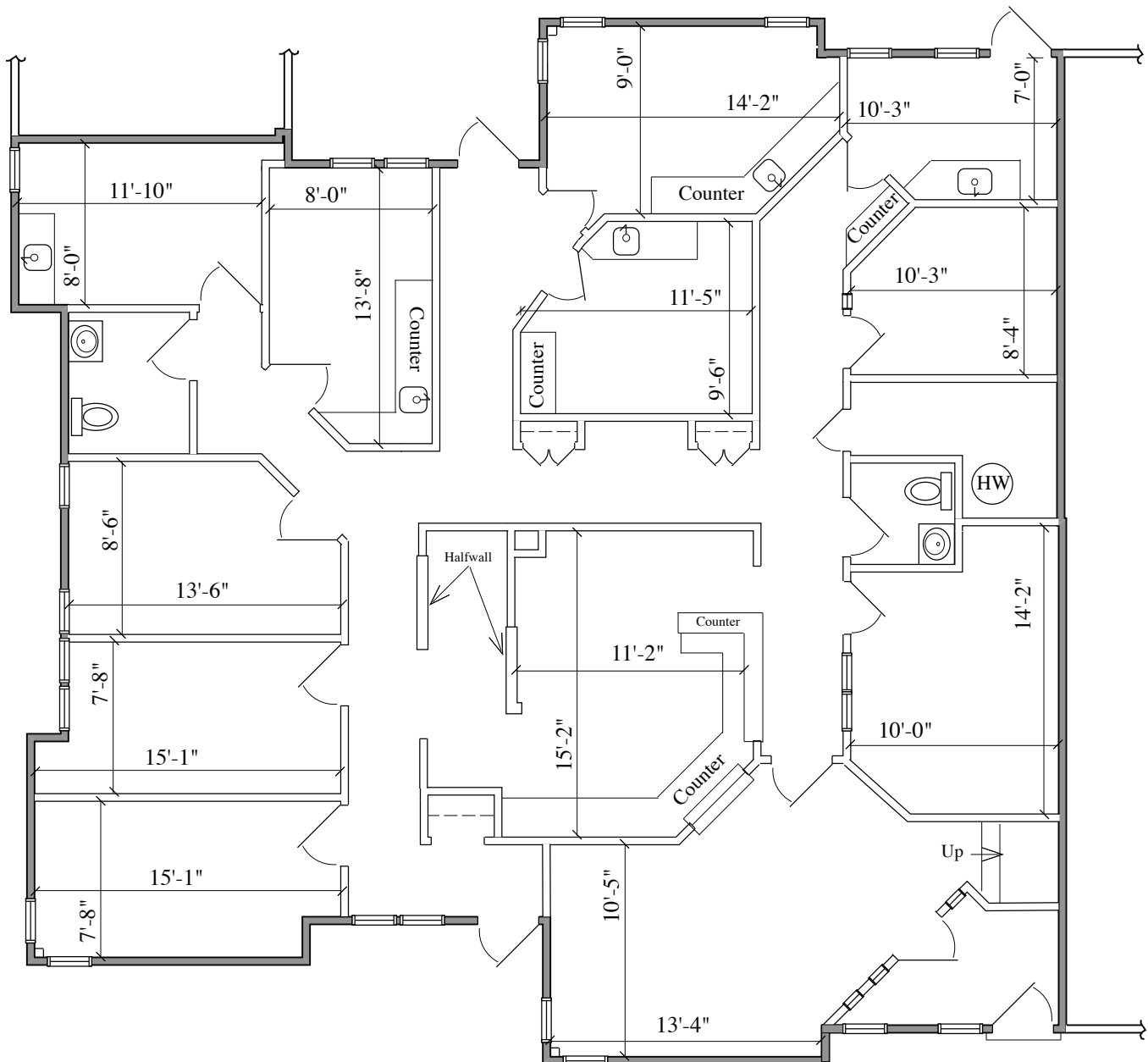
ROSECOMMERCIAL.COM



EXCLUSIVE LISTING
OFFICE / MEDICAL CONDO
FOR SALE OR LEASE

(856) 985-9522 • ROSECOMMERCIAL.COM

FLOOR PLAN



651 Route 73 North, Suite 111 • Marlton, NJ 08053 • Phone: (856) 985-9522 • Fax: (856) 985-9488

ROSECOMMERCIAL.COM