



LEASE



Location: 303 Kings Highway S. Cherry Hill, NJ **Size:** 8,054 +/- SF
Sq. Ft. Avail.: 1,500 -8,054 +/- SF **Price:** Lease: \$20.00/SF NNN

- Comments:**
- Build to Suit Medical Center
 - Major improvements throughout including new roof and HVAC
 - Ideal for any medical /professional use
 - Excellent parking

Contact: Adam Rose (ext. 22) | Michelle Marinello (ext. 28)

LEASE



Location: 1753 Route 70 East, Cherry Hill, NJ **Size:** 4,650 +/- SF
Sq. Ft. Avail.: 2,250 +/-SF & 2,400 +/- SF **Price:** \$30.00/SF NNN

- Comments:**
- **NEW CONSTRUCTION**
 - Excellent visibility and high traffic counts
 - Direct access off Route 70 and Marlkrass Road
 - Signage available
 - Ample parking
 - Located near entrance to I-295 (exit 34)

Contact: Brett Davidoff (ext. 27) | Michelle Marinello (ext 28)

LEASE



Location: 1909 Route 70, Cherry Hill, NJ **Size:** 42,000 +/- SF
Sq. Ft. Avail.: 2,000-3,613 +/- SF **Price:** \$15.00/ SF Plus Utilities

- Comments:**
- Various size suites available at below market rates
 - Desirable location with abundant parking
 - Excellent visibility on Route 70
 - Situated minutes to many restaurants, retails stores and services, regional hospital systems, and medical offices

Contact: Michelle Marinello (ext.28) | Brett Davidoff (ext. 27)

LEASE



Location: 660 N. Kings Highway, Cherry Hill, NJ **Size:** 11,000 +/- SF
Sq. Ft. Avail.: 2,800 +/- SF **Price:** \$12.00/ SF Plus Utilities

- Comments:**
- Located in the heart of Cherry Hill on heavily traveled Kings Highway
 - Motivated landlord offering below market rates
 - Location is easily accessible from Routes 70, 38 and 73 and minutes to interstate I-295 and NJ Turnpike
 - Surrounded by retail, restaurants and business
 - Elevator and on site parking

LEASE



Location: 1309 Route 70 West, Cherry Hill, NJ **Size:** 3,700 +/- SF
Sq. Ft. Avail.: 737 +/- SF **Price:** \$1,659/ Month Plus Utilities

Comments:

- Outstanding visibility on heavily traveled Route 70
- Minutes to national retailers: Wegmans, Dicks Sporting Goods, Home Depot,, Nordstrom Rack, DSW and many more
- Excellent traffic counts and demographics
- Easy access from Route 70, I-295, Route 130

Contact: **Michelle Marinello (ext. 28)**

SOLD



Location: 1236 Brace Road, Cherry Hill, NJ **Size:** 7,645 +/- SF
Sq. Ft. Avail.: 7,645 +/- SF **Price:** \$599,000.00

Comments:

- Three Story Professional Office Condo
- Ideal for any professional use
- Presently occupied by a law firm
- Close proximity to Route 70 and Route 295

Contact: **Adam Rose (ext. 22) | Michelle Marinello (ext.28)**

SOLD



Location: 207 Kings Highway S. Cherry Hill, NJ **Size:** 8,064 +/- SF
Sq. Ft. Avail.: 8,064 +/- SF **Price:** \$600,000.00

Comments:

- Build to Suite Medical Center
- Ideal for any medical /professional use
- Excellent parking

Contact: **Adam Rose (ext. 22) | Michelle Marinello (ext. 28)**

SOLD



Location: 413 Route 70 East, Cherry Hill, NJ **Size:** 6,205 +/- SF
Sq. Ft. Avail.: 6,205 +/- SF **Price:** \$950,000.00

Comments:

- Office Building for Sale
- Ideal for any professional use
- Route 70 exposure
- Great highway signage
- Easy access to all Philadelphia bridges

Contact: **Adam Rose (ext. 22)**

LEASED



Location: 1763 Route 70, Cherry Hill, NJ **Size:** 11,000 +/- SF
Sq. Ft. Avail.: 2,000 +/- SF **Price:** \$18.00/ SF Plus Utilities

Comments:

- Two Story Office Building for Lease
- Class "A" Office
- New HVAC Units
- Direct access off Route 70 and Marlkrress Road
- Abundant Parking in covered lot
- Quick access to I-295 (Exit 34) Route 70 and area bridges

Adam Rose (ext. 22) | Michelle Marinello (ext. 28)

LEASE



Location: 1892 Greentree Road, Cherry Hill, NJ
Sq. Ft. Avail.: 400 & 600 +/- SF
Comments:

- Great Signage
- Major upgrades throughout
- New parking lot
- Centrally located in Cherry Hill, NJ
- Close proximity to Routes 70, 73, I-295 and NJ Turnpike

Contact: **Michelle Marinello (ext. 28)**

Size: 10,000 +/- SF
Price: \$700.00/ Month Plus Utilities

LEASE



Location: 1998 Springdale Road, Cherry Hill, NJ
Sq. Ft. Avail.: 900 +/- SF
Comments:

- Professional office space centrally located near Greentree and Route 70
- In Suite kitchenette, Available furnished
- Monument and building signage
- Easy access to Routes 70 and 73, NJ Turnpike and I-295

Contact: **Michelle Marinello (ext. 28)**

Size: 14,000 +/- SF
Price: \$16.00/SF Plus Utilities

SALE/LEASE



Location: 1302 Route 38, Hainesport, NJ
Sq. Ft. Avail.: 4,566 +/- SF
Comments:

- Former bank branch on Rt 38, situated on corner lot at signalized intersection
- Ideal for all Medical or Retail uses
- 3 Drive-thru lanes
- Direct access off Route 38 with abundant parking
- Existing 4,000+/- SF with potential expansion to 6,000 +/- SF
- Digital pylon sign offering excellent exposure

Contact: **Brett Davidoff (ext. 27) | Michelle Marinello (ext. 28)**

Size: 4,566 +/- SF
Price: Lease Rate: \$30.00/ SF NNN
 Sale Price: Call For Information

LEASED



Location: 301 Old Marlton Pike, Marlton, NJ
Sq. Ft. Avail.: 1,765 +/- SF
Comments:

- Professional/ Medical office Building
- Centrally located off Routes 73 & 70
- Monument and building signage available
- Excellent parking
- Join Atrium Pediatrics

Contact: **Michelle Marinello (ext. 28) | Adam Rose (ext.22)**

Size: 6,000 +/- SF
Price: \$24.00/SF Plus Utilities

SALE/LEASE



Location: 750 Route 73 S, Suite 201B, Marlton, NJ
Sq. Ft. Avail.: 2,054 +/- SF
Comments:

- Professional/ Medical office Building
- Centrally located off Routes 73 & 70
- Monument and building signage available
- Excellent parking
- Join Atrium Pediatrics

Contact: **Brett Davidoff (ext. 27)**

Size: 2,054 +/- SF
Price: \$17.00/SF Plus Utilities

SOLD



Location: 512-516 Lippincott Drive, Marlton, NJ **Size:** 5,400 +/- SF
Sq. Ft. Avail.: 5,400 +/- SF **Price:** \$945,000.00
Comments:

- 3 Medical / Professional Office Condo's
- Situated in desirable location off Route 73 in dense retail and professional area
- Excellent traffic counts
- Ideal for owner user or investor

Contact: **Michelle Marinello (ext. 28) | Brett Davidoff (ext. 27)**

SALE



Location: 244 Route 38 West, Moorestown, NJ **Size:** 33,000 +/- SF on 4 +/- acres
Sq. Ft. Avail.: 33,000 +/- SF **Price:** \$4,400,000.00
Comments:

- Corner lot with excellent visibility at traffic light
- Direct access off Route 38 and Pleasant Valley
- Minutes to Route 73, I-295 and NJ Turnpike
- Central to Moorestown Mall and East Gate Square

Contact: **Jeff Lucas (ext. 32)**

LEASED

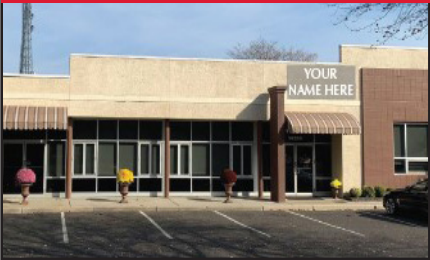


Location: 1401 South Church Street Mt. Laurel, NJ **Size:** 15,000 +/- SF on 5.43 +/- acres
Sq. Ft. Avail.: 15,000 +/- SF **Price:** Sale: \$3,500,000.00
Comments:

- Two floors with elevator access
- Abundant parking
- Solar panels
- Easy access to I-295, Route 70, Route 38 and the NJ Turnpike
- Ideal for daycare or potential redevelopment

Contact: **Jeffrey Lucas (ext. 32)**

SOLD



Location: 2026A Briggs Road, Mt Laurel, NJ **Size:** 5,040 +/- SF
Sq. Ft. Avail.: 5,040 +/- SF **Price:** Sale: Call for Information
 Lease: \$21.00/SF Plus Utilities
Comments:

- Class "A" Office Condo
- Direct access to Route 38, minutes to Route 295
- Prominent signage with abundant parking
- Meticulously maintained with high end finishes
- Fully designed and furnished

Contact: **Brett Davidoff (ext. 27)**

SALE



Location: 217 E. Laurel Road, Stratford, NJ **Size:** 1,512 +/- SF
Sq. Ft. Avail.: 1,512 +/- SF **Price:** Sale: \$195,000.00
Comments:

- Freestanding Medical Office
- Adjacent to Rowan University School of Osteopathic Medicine and Jefferson Hospital
- Ample parking with 10 +/- spaces
- Walking distance to Lindenwold PATCO Station
- Located in dense residential, retail, and business area

Contact: **Michelle Marinello (ext. 28) | Adam Rose (ext. 22)**



Location: 2301 Evesham Road, Suite 108
Voorhees, NJ

Size: 1,000 +/- SF

Price: Sale: \$175,000.00

Sq. Ft. Avail.: 1,000 +/- SF

Comments:

- Currently a therapy practice
- Ideal for all professional use
- End unit with cathedral ceilings in waiting and reception area
- Centrally located to Voorhees and Cherry Hill

Contact: **Michelle Marinello (ext. 28) | Brett Davidoff (ext. 27)**



Location: 2301 Evesham Road, Suite 109
Voorhees, NJ

Size: 1,000 +/- SF

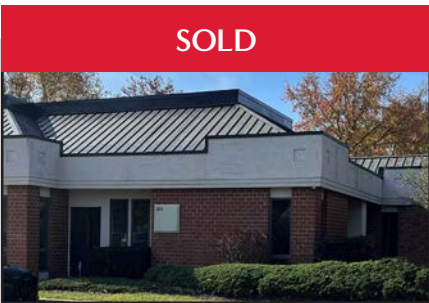
Price: Sale: \$149,000.00
Lease: \$21.00/ SF Plus Utilities

Sq. Ft. Avail.: 1,000 +/- SF

Comments:

- Currently a counseling center
- Recently renovated interior with many upgrades
- Centrally located to Voorhees and Cherry Hill

Contact: **Michelle Marinello (ext. 28) | Brett Davidoff (ext. 27)**



Location: 2301 Evesham Road, Suite 204
Voorhees, NJ

Size: 1,005 +/- SF

Price: \$145,000.00

Sq. Ft. Avail.: 1,005 +/- SF

Comments:

- Ideal for all professional
- Unit is well maintained with high end finishes, including interior french doors
- New HVAC
- Sale includes all furniture, security cameras and alarm system

Contact: **Michelle Marinello (ext. 28) | Brett Davidoff (ext. 27)**



Location: 2301 Evesham Road, Suite 209
Voorhees, NJ

Size: 1,012 +/- SF

Price: Sale: \$150,000.00
Lease: \$20.00/SF Plus Utilities

Sq. Ft. Avail.: 1,012 +/- SF

Comments:

- One story medical office condo
- Unit has waiting room and reception, with 4 offices and bathroom
- Direct access from Evesham Road
- Centrally located to Voorhees and Cherry Hill

Contact: **Michelle Marinello (ext. 28) | Brett Davidoff (ext. 27)**



Location: 2301 Evesham Road, Unit 407
Voorhees, NJ

Size: 1,000 +/- SF

Price: Sale: \$149,000.00

Sq. Ft. Avail.: 1,000 +/- SF

Comments:

- Ideal for all medical professionals
- Direct access of Evesham Road
- Centrally located to Voorhees and Cherry Hill

Contact: **Brett Davidoff (ext. 27) | Michelle Marinello (ext. 28)**

SOLD



Location: 2301 Evesham Road, Unit 504
Voorhees, NJ

Size: 1,490 +/- SF

Sq. Ft. Avail.: 1,490 +/- SF

Price: Sale: Call For Information
Lease: \$21.00/Sf Plus Utilities

Comments:

- Ideal for medical professionals
- Condo includes: Four exams rooms. two private offices, two bathrooms, Reception, large waiting room, storage and kitchenette/lab
- Ideal for all office or medical professional

Contact: **Brett Davidoff (ext. 27) | Michelle Marinello (ext. 28)**

SOLD



Location: 2301 Evesham Road, Unit 202 & 203
Voorhees, NJ

Size: 2,339 +/- SF

Sq. Ft. Avail.: 2,339 +/- SF

Price: \$349,000.00

Comments:

- Excellent condition, newly renovated interior
- Highly visible location within Pavilions of Voorhees facing Evesham Road
- Rare double unit
- Ideal for all office or medical professional

Contact: **Michelle Marinello (ext. 28)**

SALE



Location: 300 Sheppard Road, Voorhees, NJ

Size: 1,238 +/- SF

Sq. Ft. Avail.: 1,238 +/- SF

Price: \$249,000.00

Comments:

- Ideal for all professional uses
- Suite has many upgrades throughout
- Private entry to waiting/ reception area, kitchenette/ lab area with 3 spacious offices
- End unit with windowed offices

Contact: **Brett Davidoff ext. 27) | Michelle Marinello (ext. 28)**

SALE



Location: 1233 Haddonfield Berlin Road, Voorhees, NJ

Size: 2,200 +/- SF

Sq. Ft. Avail.: 2,200 +/- SF

Price: ~~\$325,000.00~~ \$225,000.00

Comments:

- Existing dental fit out
- Excellent signage on Haddonfield Berlin Road
- Unit has open 2 story floor plan with admin/ reception, 6 exam rooms, lab, second floor loft with kitchenette and office
- Ample parking on site

Contact: **Michelle Marinello (ext. 28)**

LEASE



Location: 400 Laurel Oak Road, Voorhees, NJ

Size: 50,916 +/- SF

Sq. Ft. Avail.: 1,500 - 26,250 +/- SF

Price: \$19.75/SF Plus Utilities

Comments:

- New Ownership, major improvements underway
- Property Management on site
- Build to suit or tenant improvement allowance offered
- Building signage available
- Join existing tenants Jefferson Health, Relievis Pain Management and Vein and Vascular Institute

Contact: **Brett Davidoff (ext. 27)**

LEASE



Location: 241 Cherry Avenue, Voorhees, NJ **Size:** 9,700 +/- SF
Price: \$13.00/ SF Plus Utilities
Sq. Ft. Avail.: 5,000 +/- SF
Comments:

- Space features large open areas with surrounding offices and large kitchenette
- Excellent parking
- Located minutes to PATCO and Route I-295

Contact: Adam Rose (ext. 22) | Michelle Marinello (ext. 28)

LEASE



Location: 510 S. Burnt Mill Road, Voorhees, NJ **Size:** 4,700 +/- SF
Price: Lease: \$17.00/SF Utilities
Sq. Ft. Avail.: 2,350 +/- SF
Comments:

- New Ownership with many renovations underway
- Zoning includes office and retail use
- First floor has reception area, private offices, executive office with open area
- Ample parking

Contact: Michelle Marinello (ext. 28) | Brett Davidoff (ext. 27)

SOLD

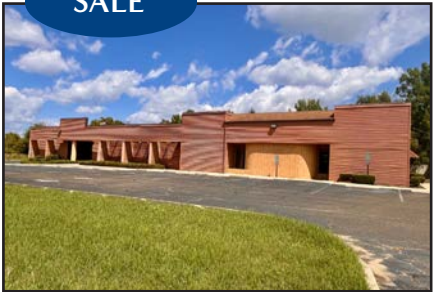


Location: 707 Haddonfield Berlin Road, Voorhees, NJ **Size:** 7,500 +/- SF on 1.26 +/- acres
Price: \$1,100,000.00
Sq. Ft. Avail.: 7,500 +/- SF
Comments:

- Fully leased medical / dental building for sale
- Large pylon sign on main road
- Excellent parking
- Income producing investment

Contact: Adam Rose (ext. 22) | Brett Davidoff (ext. 27)

SALE



Location: 231 VanSciver Parkway, Willingboro, NJ **Size:** 7,437 +/- SF
Price: \$650,000.00
Sq. Ft. Avail.: 7,437 +/- SF
Comments:

- Medical / Professional office situated minutes to Virtua Hospital- Willingboro, Cooper Health Systems, CHOP Children's Hospital as well as John F. Kennedy Recreation Center
- Located in dense residential area
- Ample parking (40 +/- spaces)
- Easy access, minutes from Route 130 and I-295

Contact: Michelle Marinello (ext. 27) | Brett Davidoff (ext. 28)

SOLD



Location: 798 Route 73, West Berlin, NJ **Size:** 8,000 +/- SF
Price: Lease: \$10.00/SF NNN
Sale: \$1,200,000.00
Sq. Ft. Avail.: 8,000 +/- SF
Comments:

- Ideal for medical or any professional use
- Building features include high ceilings, large open floor plan and reception with multiple private offices
- Highly visible location with a pylon sign on Route 73
- Excellent Traffic Counts of 29,978 VPD

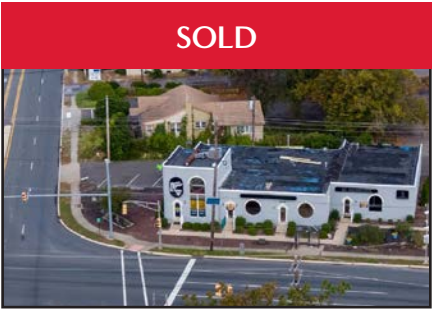
Contact: Michelle Marinello (ext. 28) | Brett Davidoff (ext. 27)

EXCLUSIVE LISTINGS RETAIL



(856) 985-9522 • ROSECOMMERCIAL.COM

April 2025



Location: 1803 & 1807 Springdale Road
1900-1904-1906 Route 70 East
Cherry Hill, NJ

Size: 2 +/- acres
Price: \$4,000,000.00

Comments:

- New CVS Coming Soon
- Traffic light corner
- High exposure
- Multiple properties included in the sale

Contact: Adam Rose (ext. 22) | Jeffery Lucas (ext. 32)



Location: 2070 East Route 70, Cherry Hill, NJ

Sq. Ft. Avail.: 1,560 +/- SF > Contiguous
2,220 +/- SF >

Size: 14,560 +/- SF
Price: \$17.00/ SF NNN

Comments:

- Stores for Lease
- Superior Location on Highly Traveled Route 70
- New Ownership and Property Management
- Abundant Parking
- Easy Access on/ off Route 70

Contact: Brett Davidoff (ext. 27)



Location: 1800 Route 70, Cherry Hill, NJ

Sq. Ft. Avail.: 4,650 +/- SF

Size: 4,546 +/- SF
Price: \$40.00/ SF NNN

Comments:

- Former Restaurant for Lease
- Outstanding visibility on Route 70
- Excellent traffic counts and parking
- Fully renovated interior with high end designer finishes
- Corner lot with direct access off Route 70 and Rockhill Road
- Located near entrance to I-295 (exit 34)

Contact: Brett Davidoff (ext. 27) | Michelle Marinello (ext 28)



Location: 1753 Route 70, Cherry Hill, NJ

Sq. Ft. Avail.: 2,250 +/- SF & 2,400 +/- SF

Size: 4,650 +/- SF
Price: \$30.00/ SF NNN

Comments:

- NEW CONSTRUCTION
- Available Spring 2025
- Excellent visibility with high traffic counts
- Building signage
- Direct access off Route 70 and traffic light as well as Marlgress Road
- Located near entrance to I-295 (exit 34)

Contact: Brett Davidoff (ext. 27) | Michelle Marinello (ext 28)

SOLD



Location: 249 Route 70 East, Cherry Hill, NJ
Sq. Ft. Avail.: 1,485 +/- SF
Comments:

- Excellent location on Route 70
- 17 Parking spaces
- High volume traffic counts of 54,882 +/- VPD
- Large pylon and building signage

Contact: **Michelle Marinello (ext. 28) | Adam Rose (ext. 22)**

Size: 1,485 +/- SF
Price: Sale: \$650,000.00
 Lease: \$26.00/SF NNN

SALE



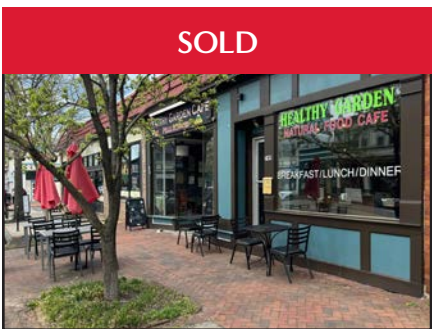
Location: JSS Plaza, 1845 Route 70, Cherry Hill, NJ
Sq. Ft. Avail.: 2,000 +/- SF (Retail)
 1,200 +/- SF (Office)
Comments:

- New ownership and management
- Close proximity to I-295 and NJ Turnpike
- High exposure on heavily traveled Route 70
- Adjacent to University of Pennsylvania 150,000 SF medical facility and dense retail district

Contact: **Brett Davidoff (ext. 27)**

Size: 9,100 +/- SF Retail/ Office
Price: Sale: \$1,300,000.00
 Lease: \$18.00/ SF NNN

SOLD



Location: 747-749 Haddon Ave, Collingswood NJ
Sq. Ft. Avail.: 3,062 +/- SF Restaurant
Comments:

- Fully equipped, turn key restaurant in the heart of downtown Collingswood
- Newly renovated in 2020
- Top of the line appliances, fixtures and furniture included
- Seating for 48 inside and 16 outside
- 7 private parking spots behind the building with ample off street and public

Contact: **Brett Davidoff (ext. 27)**

Size: 3,062 +/- SF
Price: Sale: \$795,000.0

LEASE



Location: 337-343 South Broadway
 Gloucester City, NJ
Sq. Ft. Avail.: 8,795 +/- SF
Comments:

- Large open retail space available (Former Gym) and Warehouse
- Ideal for showroom/ warehouse, gym or retail use
- Major building improvements including new roof, HVAC, flooring and bathroom
- 14 foot ceiling
- Easy access to Routes 130, I-295, I-676, Route 42 and area bridges

Contact: **Michelle Marinello (ext. 28)**

Size: 8,795 +/- SF
Price: \$11.00/ Month Plus Utilities

SALE/LEASE



Location: 1302 Route 38, Hainesport, NJ
Sq. Ft. Avail.: 4,000 +/- SF
Comments:

- Former bank Branch on Rt 38, situated on corner lot at signalized intersection
- Ideal for all Medical or Retail uses
- 3 Drive-thru lanes
- Direct access off Route 38 with abundant parking
- Existing 4,000 +/- SF with potential expansion to 6,000 +/- SF
- Digital pylon sign offering excellent exposure

Contact: **Brett Davidoff (ext. 27) | Michelle Marinello (ext. 28)**

Size: 4,000 +/- SF
Price: Lease Rate: \$30.00/ SF NNN
 Sale Price: Call For Information

SOLD



Location: 28 & 32 South Church Road
Maple Shade, NJ

Size: 3,700 +/- SF
Price: \$900,000.00

Sq. Ft. Avail.: 3,700 +/- SF

- Comments:**
- Former Restaurant and Retail Building For Sale
 - Building includes a fully fit out restaurant with equipment, furniture, fixtures and kitchen
 - Excellent exposure and abundant parking
 - Property in outstanding condition
 - Liquor License can be available

Contact: **Adam Rose (ext. 22)**

SOLD



Location: 519 N. White Horse Pike, Magnolia, NJ

Size: 4,500 +/- SF

Sq. Ft. Avail.: 4,500 +/- SF

Price: \$439,000.00

- Comments:**
- Formerly occupied by Heating and Air Conditioning Company
 - Pylon signage
 - 123 Feet of frontage on heavily traveled White Horse Pike
 - Fast easy access to Route I-295 and Philadelphia area Bridges

Contact: **Michelle Marinello (ext. 28) | Ross Donolow (ext. 25)**

LEASE



Location: 103-137 Merchants Way, Marlton, NJ

Size: 30,000 +/- SF

Sq. Ft. Avail.: 1,018 +/- SF

Price: \$17.00/SF NNN

- Comments:**
- Located on heavily traveled Tomlinson Mill Road
 - Excellent parking
 - Large pylon sign on main road
 - Join Kings Grant Wines & Liquors, Cibo by Illiano, Heritage Cigars, Bean Street, King Wong and JR Nail

Contact: **Brett Davidoff (ext. 27) | Michelle Marinello (ext. 28)**

LEASE



Location: Bridgeboro Square Center
80-88 Hartford Road, Moorestown, NJ

Size: 10,000 +/- SF

Sq. Ft. Avail.: 1,500 +/- SF

Price: \$18.00/ SF NNN

- Comments:**
- Former Hair Salon
 - Highly visible shopping center with Goddard School, Investors Bank, Delran Pharmacy & Deli
 - Ample Parking
 - Easy Access to Route 130, I-295
 - Easy access to Routes 73, 38, I-295 and NJ Turnpike

Contact: **Adam Rose (ext. 22)**

SOLD



Location: 1134 Route 73
Mount Laurel, NJ

Size: 5,000 +/- SF on 1.3 +/- acres

Sq. Ft. Avail.: 5,000 +/- SF on 1.39 +/- acres

Price: \$1,100,000.00

- Comments:**
- Former Restaurant Building
 - Excellent location on Route 73
 - Dual access on Church Rd and Route 73
 - Former Denny's
 - Easy access to Routes 73, 38, I-295 and NJ Turnpike

Contact: **Adam Rose (ext. 22)**

SALE



Location: 6959 Crescent Boulevard, Pennsauken, NJ **Size:** 3,000 +/- SF
Sq. Ft. Avail.: 3,000 +/- SF **Price:** \$525,000.00
Comments:

- Showroom with 3 bay garage doors and large yard for outdoor storage
- Permitted use includes: retail and professional office
- New HVAC and recent roof replacement
- Excellent signage and frontage on heavily traveled Route 130
- Minutes to Philadelphia bridges with easy access to Routes 70,73 and 38

Contact: **Michelle Marinello (ext. 28)**

SOLD



Location: 4651 Route 42, Turnersville, NJ **Size:** 7,100 +/- SF on 2.1 acres
Sq. Ft. Avail.: 7,100 +/- SF **Price:** Sale Price: \$1,750,000.00
Comments:

- Former Bank, Ideal for redevelopment Lease Rate: \$18.00/SF NNN
- Access from both Route 42 and Fries Mill Road
- Two drive-thru's
- 70+ parking spaces
- Possible expansion up to 15,000 +/- SF
- Site has superior demographics

Contact: **Adam Rose (ext. 22) | Michelle Marinello (ext. 28)**

SOLD



Location: 1572-1576 Route 206, Tabernacle NJ **Size:** 13,656 +/- SF
Sq. Ft. Avail.: 2,000 +/- SF, Store #2 **Price:** \$12.00/SF NNN
 1,500 +/- SF, Store #7
Comments:

- Strip Center Units available for lease
- Situated on Route 206 with high traffic counts
- Join existing shoppes: Waller's Deli, Upper Crust Pizza and other established retail shoppes.

Contact: **Adam Rose (ext. 22)**

LEASED



Location: 903 White Horse Road **Size:** 6,500 +/- SF
 Voorhees, NJ **Price:** \$15.50/SF NNN
Sq. Ft. Avail.: 3,300 - 5,000 +/- SF
Comments:

- Income producing investment which includes a long-term lease with Fed-Ex
- Ideal for all retail, medical and professional use
- 3,100 square feet available immediately with approvals in place for a 2,200 square foot expansion

Contact: **Brett Davidoff (ext. 27)**



EXCLUSIVE LISTINGS INDUSTRIAL

(856) 985-9522 • ROSECOMMERCIAL.COM

April 2025



Location: 600 Deer Road, Cherry Hill, NJ **Size:** 7,650 +/- SF
Sq. Ft. Avail.: 7,650 +/- SF **Price:** \$524,900.00
Comments:

- Two Story Office/ Warehouse Condo
- First floor offers 3 private offices, conference room large open bullpen area with kitchenette and bathrooms plus 1,254 +/- sf warehouse.
- Second floor has 7 offices, bullpen area kitchen and 2 bathrooms
- Centrally located near I-295 Exit 34, Route 73 and the NJ Turnpike
- 10.9' ceiling heights
- 1 drive in door

Contact: Michelle Marinello (ext. 28) | Brett Davidoff (ext. 27)



Location: 73 & 79 Hartford Road, Delran NJ **Size:** 7.6 +/- acres
Price: \$3,000,000.00
Comments:

- Truck Storage and Repair Facility
- 6,000 +/- SF repair facility/ garage with 2 additional buildings on site
- Less than 1/4 mile to US Route 130, nearby Route I-295 and Philadelphia Bridges
- Currently income producing
- Situated in redevelopment zone with potential for residential, commercial or institutional use
- Zoned Neighborhood Commercial (NC) & Agricultural (A)

Contact: Ira Taylor (ext. 34)



Location: 612 Gravelly Hollow, Medford, NJ **Size:** 16,542 +/- SF
Available: 4,000 +/- SF **Price:** Lease Rate: \$10.00/ SF NNN
Sale Price: \$1,650,000.00
Comments:

- Recently renovated income producing industrial/ flex building
- Ideal for owner user, investor
- Ceiling heights range from 10' - 15"
- 2 Loading and 6 drive in doors
- Ample parking

Contact: Michelle Marinello (ext. 28)



Location: 3 Reeves Station Road, Medford, NJ **Size:** 44,000 +/- SF on 26 +/- acres
Price: \$804,000.00
Comments:

- Easy access to Route 70 and Route 206
- Complex of 3 industrial buildings totaling 44,000 +/- SF
- Ideal property for school, office campus, manufacturing or distribution use
- Pylon signage located at the street
- Motivated seller
- Zoned P.I./ Planned Industrial

Contact: Jeffrey Lucas (ext. 32)

LEASED

Location: 9208-9210 Collins Avenue, Pennsauken, NJ **Size:** 6,450 +/- SF
Sq. Ft. Avail.: 6,450 +/- SF **Price:** \$599,000.00

Comments:

- Industrial/Warehouse centrally located off Haddonfield Road
- 2 Loading docks and 1 drive in door
- Situated on .63 acres
- Central location with easy access to Route 130, Route 90 and Route 73
- Minutes to Philadelphia and Route I-95 via the Betsy Ross Bridge

Contact: Adam Rose (ext. 22) | Michelle Marinello (ext. 28)

SOLD

Location: 5333 Marlton Pike, Pennsauken, NJ **Size:** 5,501 +/- SF
Sq. Ft. Avail.: 5,501 +/- SF **Price:** \$450,000.00

Comments:

- High visibility location on Marlton Pike (Route 70)
- Pylon Signage
- On site parking for 20 +/- vehicles
- Easy access to Routes 130, 73, 70 and 38 as well as Philadelphia area bridges

Contact: Adam Rose (ext. 22) | Michelle Marinello (ext. 28)

SOLD

Location: 2650 Haddonfield Road
 Pennsauken, NJ **Size:** 21,000 +/- SF
Price: \$1,092,000.00

Sq. Ft. Avail.: 21,000 +/- SF
Comments:

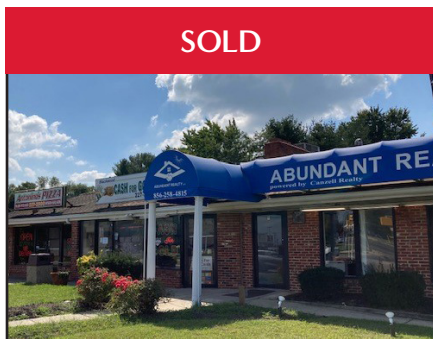
- Warehouse, Showroom and Office for Sale or Lease
- 2014 Roof
- Public Sewage and Water
- Accessible from the Cherry Hill Mall

Contact: Adam Rose (ext. 22) | Jeffrey Lucas (ext. 32)

EXCLUSIVE LISTINGS INVESTMENT

(856) 985-9522 • ROSECOMMERCIAL.COM

April 2025



SOLD

Location: 1031 Little Gloucester Road
Blackwood, NJ

Size: 8,000 +/- SF
Price: \$1,500,000.00

Available: Fully Leased

Comments:

- Strip Center for Sale
- 170 +/- feet of frontage on Little Gloucester Road
- 5:1 Parking Ratio
- Built in 1990
- Situated at signalized intersection on Blackwood Clementon Road

Contact: Adam Rose (ext. 22)



SALE

Location: 845 Route 70, Cherry Hill, NJ

Size: 9,100 +/- SF Retail/ Office

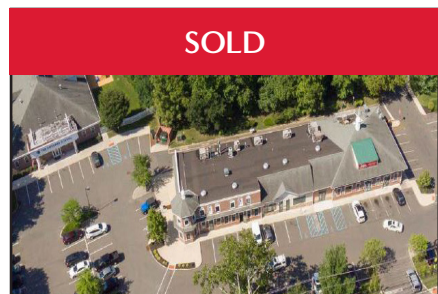
Available: 7,000 +/- SF (Retail)
1,200 +/- SF (Office)

Price: Sale: \$1,300,000.00

Comments:

- Ideal for owner user
- Close proximity to I-295 and NJ Turnpike
- High exposure on heavily traveled Route 70
- Adjacent to University of Pennsylvania 150,000 SF medical facility and dense retail district

Contact: Brett Davidoff (ext. 27)



SOLD

Location: Bridgeboro Shopping Center
80 Hartford Road, Delran

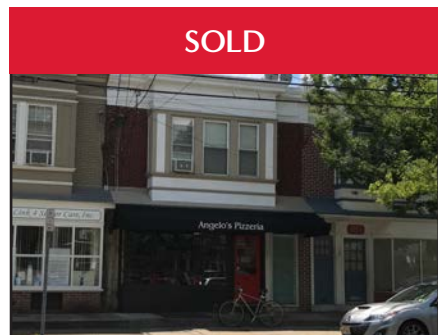
Size: 23,228 +/- SF
Price: \$5,400,000.00

Available: 1,342 +/- SF Unit 4
2,500 +/- SF Unit 5
3,842 +/- SF Total

Comments:

- Upscale Shopping Center for Lease
- Tenants include Goddard School, Investors Bank, Hartford Market, HQ Cleaners, Delran Pharmacy and a Nail Salon

Contact: Adam Rose (ext. 22)



SOLD

Location: 122 N Haddon Avenue
Haddonfield, NJ

Size: 2,000 +/- SF
Price: \$2,650.00/ Month Plus Utilities

Available: 1,000 +/- SF Retail Store

Comments:

- Major improvements completed
- Located in the heart of downtown Haddonfield retail district
- PATCO High Speedline 1 block away
- Second floor two bedroom apartment (LEASED)
- Income Producing Investment

Contact: Adam Rose (ext. 22)

SALE/LEASE



Location: 612 Gravelly Hollow, Medford, NJ
Available: 7,000 +/- SF

Size: 16,542 +/- SF
Price: Lease Rate: \$10.00/ SF NNN
 Sale Price: \$1,650,000.00

- Comments:**
- Recently renovated income producing industrial/ flex building
 - Ideal for owner user, investor
 - Ceiling heights range from 10' - 15"
 - 1 Loading and 6 drive in doors
 - Ample parking

Contact: **Michelle Marinello (ext. 28)**

SOLD



Location: Holly Edge Shopping Center
 1649 Route 38, Mount Holly, NJ
Available: 3,000 +/- SF

Size: 14,700 +/- SF
Price: \$1,700,000.00

- Comments:**
- Strip center for sale
 - 10,200 +/- SF Retail and 4,500 +/- SF Warehouse (behind the center)
 - Excellent signage on heavily traveled Route 38
 - Retail, tenants include: Leslie Pool, On The Go (Laundry Mat), Absolute Weave & Ocean Tents
 - B-2 Zoning In Mt Holly Urban Enterprise Zone (UEZ)
 - Ample parking

Contact: **Brett Davidoff (ext. 27) | Adam Rose (ext.22)**

SOLD



Location: 813 East Gate Drive, Mount Laurel, NJ
Available: Fully Leased

Size: 22,000 +/- SF
Price: \$3,300,000.00

- Comments:**
- Fully leased medical building for sale with three tenants
 - Major Improvements Throughout Including New Roof, HVAC and Parking Lot
 - Pylon Signage on Fellowship Road
 - Located at Signalized Intersection

Contact: **Adam Rose (ext. 22) | Jeffrey Lucas (ext. 32)**

SOLD



Location: 1572-1576 Route 206, Tabernacle NJ
Available: 13,656 +/- SF

Size: 13,656 +/- SF
Price: \$1,600,000.00

- Comments:**
- Strip Center for sale
 - Situated on Route 206 with high traffic counts
 - Lots of upside in rental rates

Contact: **Adam Rose (ext. 22)**

SOLD



Location: 707 Haddonfield Berlin Road, Voorhees, NJ
Available: 7,500 +/- SF

Size: 7,500 +/- SF on 1.26 +/- acres
Price: \$1,100,000.00

- Comments:**
- Fully leased medical / dental building for sale
 - Large pylon sign on main road
 - Excellent parking
 - Income producing investment

Contact: **Adam Rose (ext. 22) | Brett Davidoff (ext. 27)**



Location: 1130 Route 130, Burlington, NJ **Size:** 20,340 +/- SF on 2.57 +/- acres
Price: \$2,000,000.00

- Comments:**
- Property situated on heavily traveled Route 130
 - East access to PA Turnpike and the Burlington Bristol Bridge
 - High traffic counts
 - Central location to I-295, I-95 Route 130 and NJ Turnpike

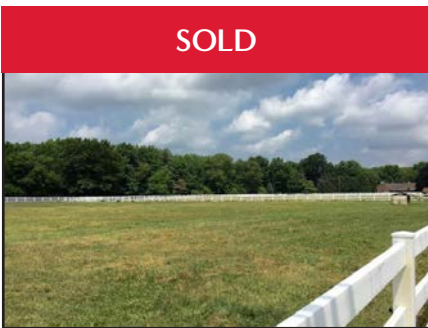
Contact: Jeffrey Lucas (ext. 32)



Location: 1164 Route 130, Burlington, NJ **Size:** 10,800 +/- SF on 1.46 +/- acres
Price: \$1,400,000.00

- Comments:**
- Property situated on heavily traveled Route 130
 - East access to PA Turnpike and the Burlington Bristol Bridge
 - High traffic counts
 - Central location to I-295, I-95 Route 130 and NJ Turnpike

Contact: Jeffrey Lucas (ext. 32)



Location: 350 East Evesham Road, Cherry Hill, NJ **Size:** 26 +/- acres
Price: \$5,500,000.00

Comments:

- Development Site for Sale
- Access to Evesham and Springdale Roads
- Adjacent to Woodcrest Country Club
- On the Border of Cherry Hill and Voorhees

Contact: Jeffrey Lucas (ext. 32)



Location: 73 & 79 Hartford Road, Delran NJ **Size:** 7.6 +/- acres
Price: \$3,000,000.00

Comments:

- Truck Storage and Repair Facility
- 6,000 +/- SF repair facility/ garage with 2 additional buildings on site
- Less than 1/4 mile to US Route 130, nearby Route I-295 and Philadelphia Bridges
- Currently income producing
- Situated in redevelopment zone with potential for residential, commercial or institutional use
- Zoned Neighborhood Commercial (NC) & Agricultural (A)

Contact: Ira Taylor (ext. 34)

UNDER AGREEMENT



Location: Church and Hartford Road, Medford, NJ **Size:** 11.52 +/- acres
Price: \$1,100,000.00 (60 day due diligence)
 \$2,500,000.00 (subject to approvals)

Comments:

- Redevelopment Opportunity
- Permitted use includes: Bank, Professional or Medical Office, Retail and more
- Outstanding location adjacent to Lenape High School, Johnsons Farm and Wyngate 55+ residential housing

Contact: Jeffrey Lucas (ext. 32)

SALE



Location: 600-610 Church Street, Moorestown & Mount Laurel, NJ **Size:** 11.25 +/- acres
Price: \$4,400,000.00

Comments:

- Situated on heavily traveled Church Street
- Ideal location for redevelopment / change of use to Assisted Living or Stage of Life Care
- Close proximity to retail centers such as Moorestown Mall and Centerton Square with Wegmans, Target, Costco and many more

Contact: Ira Taylor (ext. 34)

SALE



Location: 244 Route 38 West, Moorestown, NJ **Size:** 33,000 +/- SF on 4 +/- acres
Price: \$4,400,000.00

Comments:

- Corner lot with excellent visibility at traffic light
- Direct access off Route 38 and Pleasant Valley
- Minutes to Route 73, I-295 and NJ Turnpike
- Central to Moorestown Mall and East Gate Square

Contact: Jeff Lucas (ext. 32)

SALE



Location: 1017 S. Church Street, Mount Laurel, NJ **Size:** 11.7 +/- acres
Price: \$1,170,000.00

Comments:

- Land for Sale
- Former Garden Center
- On Heavily Travelled Church Street

Contact: Jeffrey Lucas (ext. 32)

SOLD



Location: 3018 Route 38 Mount Laurel, NJ **Size:** 4 +/- acres
Price: \$2,000,000.00

Comments:

- Commercial Land for Sale
- Ideal development site
- Frontage on Route 38 and Union Mill Road
- Across from major new mixed use development

Contact: Jeffrey Lucas (ext. 32)

SALE



Location: 126 Zurbrug Way, Riverside, NJ

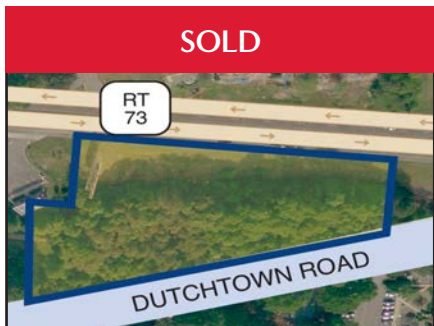
Size: 2.89 +/- acres

Price: \$900,000.0

- Comments:**
- Property is within walking distance to downtown Riverside and the Light Rail Station of NJ Transit
 - Located within a designated redevelopment zone
 - A long term PILOT is available, to be negotiated between developer and Riverside
 - The township is seeking light commercial or industrial uses

Contact: Jeffrey Lucas (ext. 32)

SOLD



Location: 121 Route 73, Voorhees, NJ

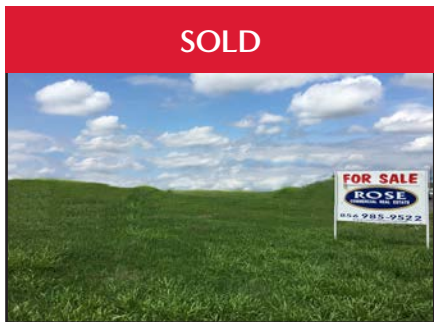
Size: 1.99 +/- acres

Price: \$1,200,000.00

- Comments:**
- Ideal for Medical/ Office/ Bank/ Child or Adult Daycare Centers
 - Adjacent to Virtua Hospital

Contact: Adam Rose (ext. 22)

SOLD



Location: 111 Centennial Boulevard
Voorhees, NJ

Size: 7.16 +/- acres

Price: \$1,200,000.00

- Comments:**
- Approved for 17,116 +/- sf and 5,550 +/- sf buildings
 - Easy Access to Route 561 and Evesham Road
 - 30 minutes from Philadelphia, close to NJ Turnpike Exit 4
 - Ideal for assisted living or public storage

Contact: Jeffrey Lucas (ext. 32)

SALE/LEASE



Location: 1741 S Black Horse Pike
Williamstown, NJ

Size: 6.55 +/- acres

Price: \$4,500,000.00

- Comments:**
- Restaurant or redevelopment opportunity located at highly visible corner
 - At signalized intersection
 - 366 Feet of frontage on Black Horse Pike
 - Dual access on Malaga Road and Black Horse Pike
 - Currently Pete's Diner

Contact: Ira Taylor (ext. 34)