



EXCLUSIVE LISTING

OFFICE CONDOMINIUM(S)
SALE | LEASE | LEASE PURCHASE

WILLOW RIDGE EXECUTIVE OFFICE PARK
750 ROUTE 73 SOUTH
MARLTON, NJ



Property Description: Office Condominium(s) Available

Available: Suite 305 - 1,982 +/- SF
Lease Rate: \$18.50/ SF Plus Utilities

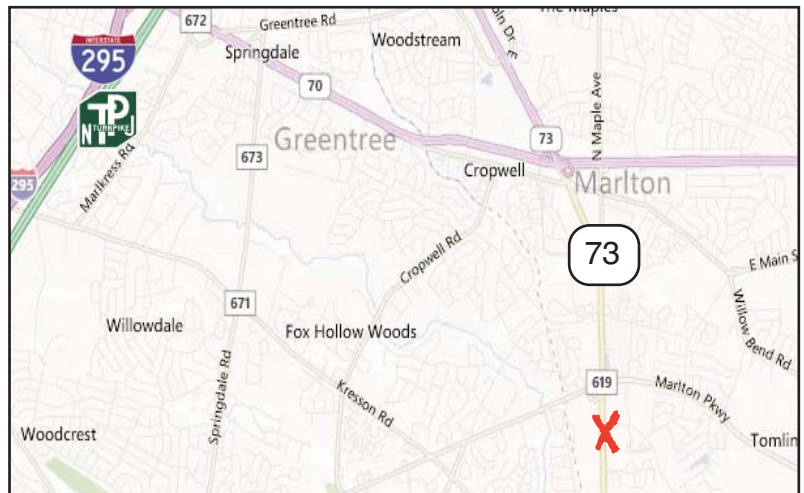
Available: Suite 206 - 1,776 +/- SF
Lease Rate: \$14.00/SF Plus Utilities

Taxes: \$5,963.73 (2017)

Condo Fees: \$349.98/Month

Sale Price: \$219,000.00

- Comments:**
- Conveniently Located on Route 73
 - Situated Within Willow Ridge Executive Office Park
 - Many Nearby Amenities Including Restaurants, Shopping and Banks
 - Close Proximity to the New Virtua Hospital and Within Minutes from Route 70, I-295, and the New Jersey Turnpike



For Further Information, Please Contact:

Brett Davidoff (Ext. 27)

(856) 985-9522

bdavidoff@rosecommercial.com

ALL INFORMATION FURNISHED REGARDING PROPERTY FOR SALE, RENTAL OR FINANCING IS FROM SOURCES DEEMED RELIABLE, BUT NO WARRANTY OR REPRESENTATION IS MADE AS TO THE ACCURACY THEREOF AND SAME IS SUBMITTED SUBJECT TO ERRORS, OMISSIONS, CHANGE OF PRICE, RENTAL OR OTHER CONDITIONS, PRIOR SALE, LEASE OR FINANCING OR WITHDRAWAL WITHOUT NOTICE. NO LIABILITY OF ANY KIND IS TO BE IMPOSED ON THE BROKER HEREIN.

651 Route 73 North, Suite 111 • Marlton, NJ 08053 • Phone: (856) 985-9522 • Fax: (856) 985-9488

www.rosecommercial.com

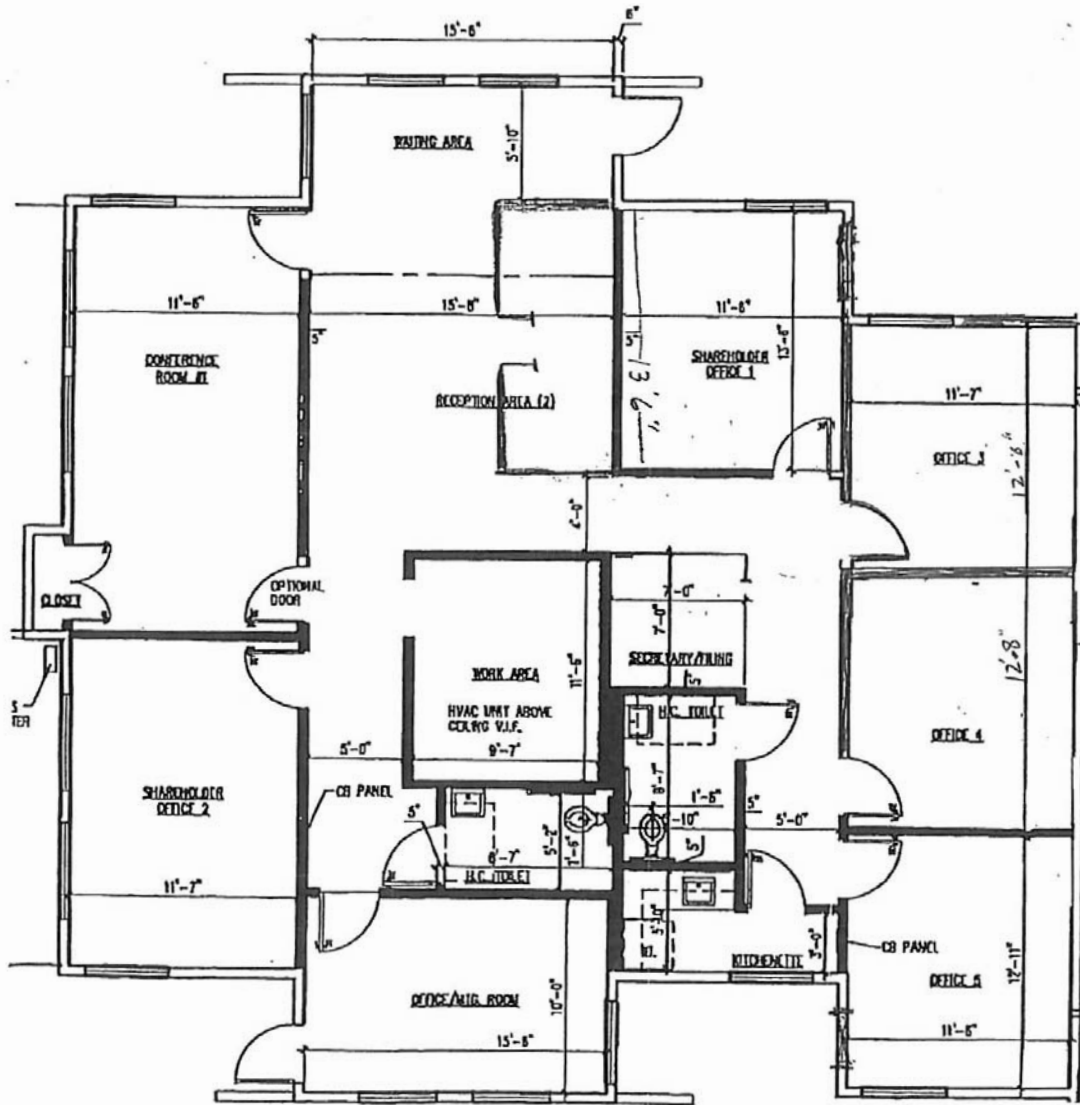


WILLOW RIDGE EXECUTIVE OFFICE PARK

750 ROUTE 73 SOUTH, SUITE 206

EXCLUSIVE LISTING

MARLTON, NJ



ALL INFORMATION FURNISHED REGARDING PROPERTY FOR SALE, RENTAL OR FINANCING IS FROM SOURCES DEEMED RELIABLE, BUT NO WARRANTY OR REPRESENTATION IS MADE AS TO THE ACCURACY THEREOF AND SAME IS SUBMITTED SUBJECT TO ERRORS, OMISSIONS, CHANGE OF PRICE, RENTAL OR OTHER CONDITIONS, PRIOR SALE, LEASE OR FINANCING OR WITHDRAWAL WITHOUT NOTICE. NO LIABILITY OF ANY KIND IS TO BE IMPOSED ON THE BROKER HEREIN.

651 Route 73 North, Suite 111 • Marlton, NJ 08053 • Phone: (856) 985-9522 • Fax: (856) 985-9488



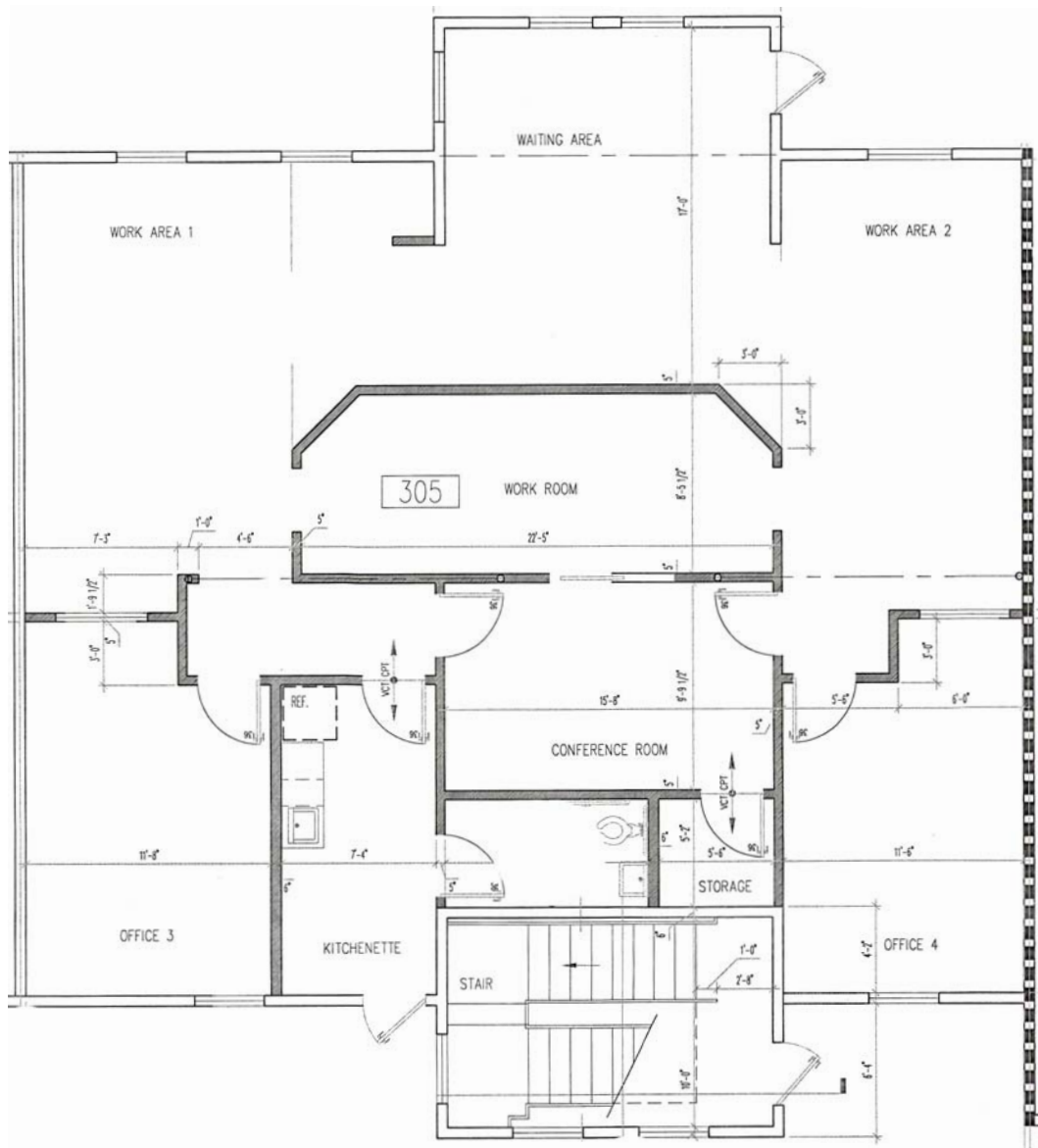
WILLOW RIDGE EXECUTIVE OFFICE PARK

750 ROUTE 73 SOUTH

MARLTON, NJ

EXCLUSIVE LISTING

Willow Ridge Executive Office Park
Suite 305 1,982 +/- SF



ALL INFORMATION FURNISHED REGARDING PROPERTY FOR SALE, RENTAL OR FINANCING IS FROM SOURCES DEEMED RELIABLE, BUT NO WARRANTY OR REPRESENTATION IS MADE AS TO THE ACCURACY THEREOF AND SAME IS SUBMITTED SUBJECT TO ERRORS, OMISSIONS, CHANGE OF PRICE, RENTAL OR OTHER CONDITIONS, PRIOR SALE, LEASE OR FINANCING OR WITHDRAWAL WITHOUT NOTICE. NO LIABILITY OF ANY KIND IS TO BE IMPOSED ON THE BROKER HEREIN.

651 Route 73 North, Suite 111 • Marlton, NJ 08053 • Phone: (856) 985-9522 • Fax: (856) 985-9488