

# PROFESSIONAL OFFICE CONDOMINIUM FOR SALE



EXCLUSIVE LISTING

**SHEPPARD OFFICE PARK**  
**2 SHEPPARD ROAD SUITE 501, 600,601**  
**VOORHEES, NJ**



**Property Description:** Professional Office  
Condo for Sale

**Size:** 3,700 +/- SF

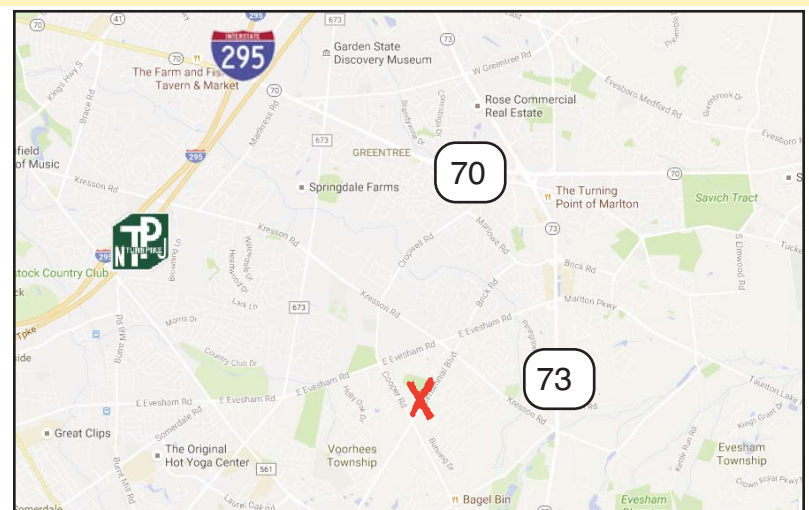
**Taxes:** \$12,086.04 (2016)

**Condo Fees:** \$14,575.00/year

**Sale Price:** \$499,000.00

**Parking Ratio:** 5.65/1000

- Comments:**
- Conveniently Located on the corner of Cooper Road and Centennial Road, Situated Within Sheppard Office Park
  - Many Nearby Amenities Including Restaurants, Shopping, Banks and Virtua & Cooper Hospitals
  - Within Minutes from Route 73, and I-295



*For Further Information,*

*Please Contact:*

**Brett Davidoff (Ext. 27)**

**(856) 985-9522**

**[bdavidoff@rosecommercial.com](mailto:bdavidoff@rosecommercial.com)**

ALL INFORMATION FURNISHED REGARDING PROPERTY FOR SALE, RENTAL OR FINANCING IS FROM SOURCES DEEMED RELIABLE, BUT NO WARRANTY OR REPRESENTATION IS MADE AS TO THE ACCURACY THEREOF AND SAME IS SUBMITTED SUBJECT TO ERRORS, OMISSIONS, CHANGE OF PRICE, RENTAL OR OTHER CONDITIONS, PRIOR SALE, LEASE OR FINANCING OR WITHDRAWAL WITHOUT NOTICE. NO LIABILITY OF ANY KIND IS TO BE IMPOSED ON THE BROKER HEREIN.

651 Route 73 North, Suite 111 • Marlton, NJ 08053 • Phone: (856) 985-9522 • Fax: (856) 985-9488

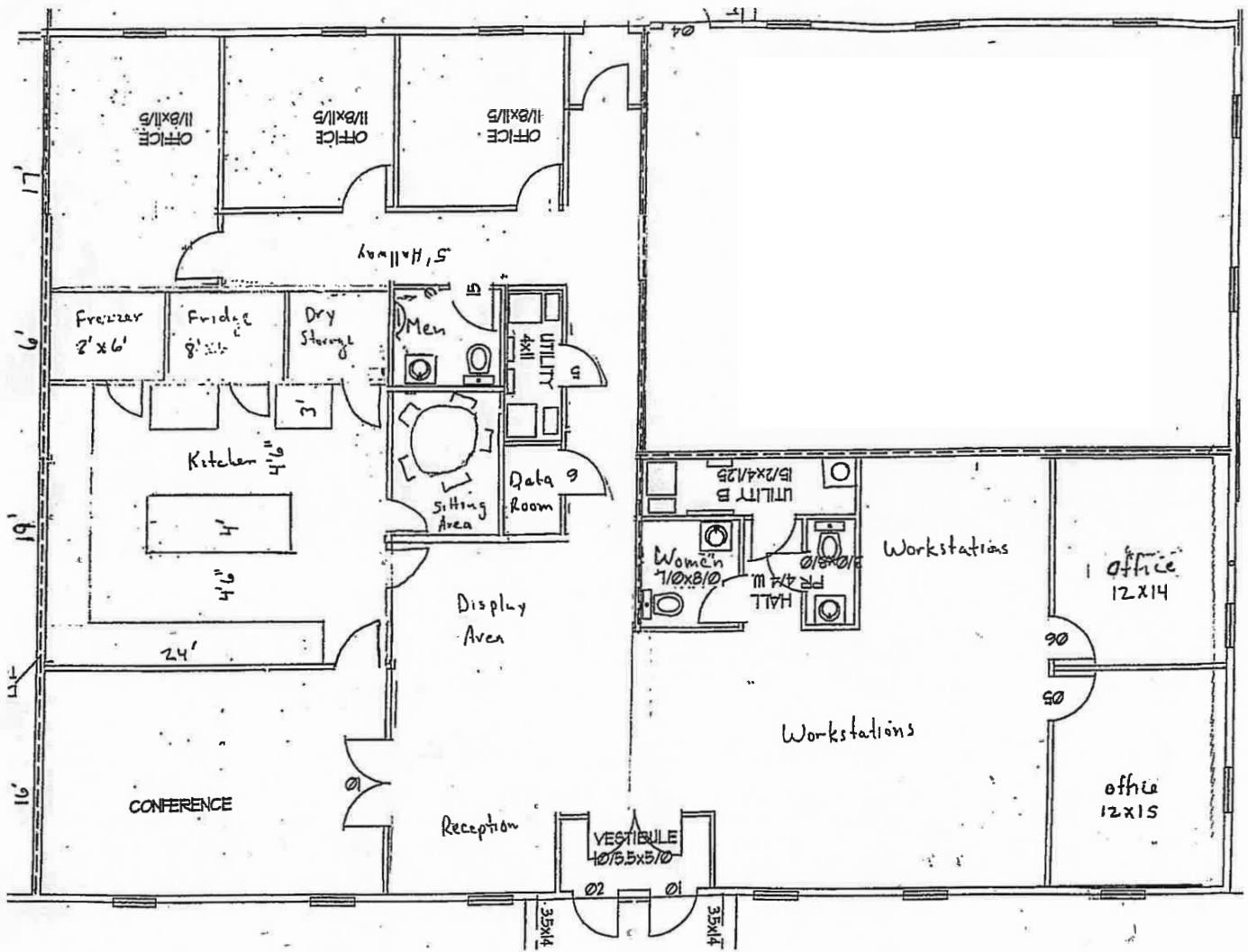
[www.rosecommercial.com](http://www.rosecommercial.com)

PROFESSIONAL OFFICE CONDOMINIUM  
FOR SALE



SHEPPARD OFFICE PARK  
2 SHEPPARD ROAD 501,600,601  
VOORHEES, NJ

EXCLUSIVE LISTING



ALL INFORMATION FURNISHED REGARDING PROPERTY FOR SALE, RENTAL OR FINANCING IS FROM SOURCES DEEMED RELIABLE, BUT NO WARRANTY OR REPRESENTATION IS MADE AS TO THE ACCURACY THEREOF AND SAME IS SUBMITTED SUBJECT TO ERRORS, OMISSIONS, CHANGE OF PRICE, RENTAL OR OTHER CONDITIONS, PRIOR SALE, LEASE OR FINANCING OR WITHDRAWAL WITHOUT NOTICE. NO LIABILITY OF ANY KIND IS TO BE IMPOSED ON THE BROKER HEREIN.

651 Route 73 North, Suite 111 • Marlton, NJ 08053 • Phone: (856) 985-9522 • Fax: (856) 985-9488

[www.rosecommercial.com](http://www.rosecommercial.com)