

PROFESSIONAL OFFICE BUILDING FOR LEASE



EXCLUSIVE LISTING

1892 GREENTREE ROAD CHERRY HILL, NJ



Property Description: Two Story Office Building for Lease

Building Size: 10,000 +/- SF

Available: 591 +/- SF Terrace Suite 3 \$800/month
170 +/- SF Suite 203 \$300/month

Comments:

- Great Signage
- Major Upgrades Throughout
- New Parking Lot
- Centrally Located in Cherry Hill
- Close Proximity to Routes 70, 73, I-295 and the NJ Turnpike

For Further Information, Please Contact:

Adam Rose (ext. 22)

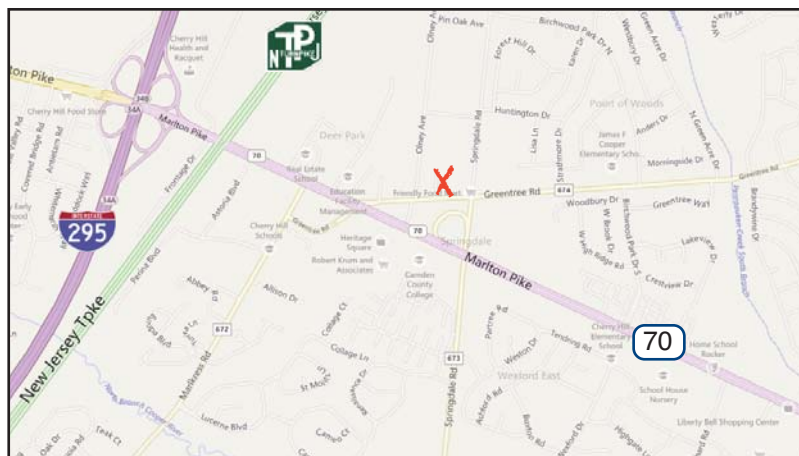
Monica Walsh (ext. 25)

(856) 985-9522

arose@rosecommercial.com

mwalsh@rosecommercial.com

ALL INFORMATION FURNISHED REGARDING PROPERTY FOR SALE, RENTAL OR FINANCING IS FROM SOURCES DEEMED RELIABLE, BUT NO WARRANTY OR REPRESENTATION IS MADE AS TO THE ACCURACY THEREOF AND SAME IS SUBMITTED SUBJECT TO ERRORS, OMISSIONS, CHANGE OF PRICE, RENTAL OR OTHER CONDITIONS, PRIOR SALE, LEASE OR FINANCING OR WITHDRAWAL WITHOUT NOTICE. NO LIABILITY OF ANY KIND IS TO BE IMPOSED ON THE BROKER HEREIN.



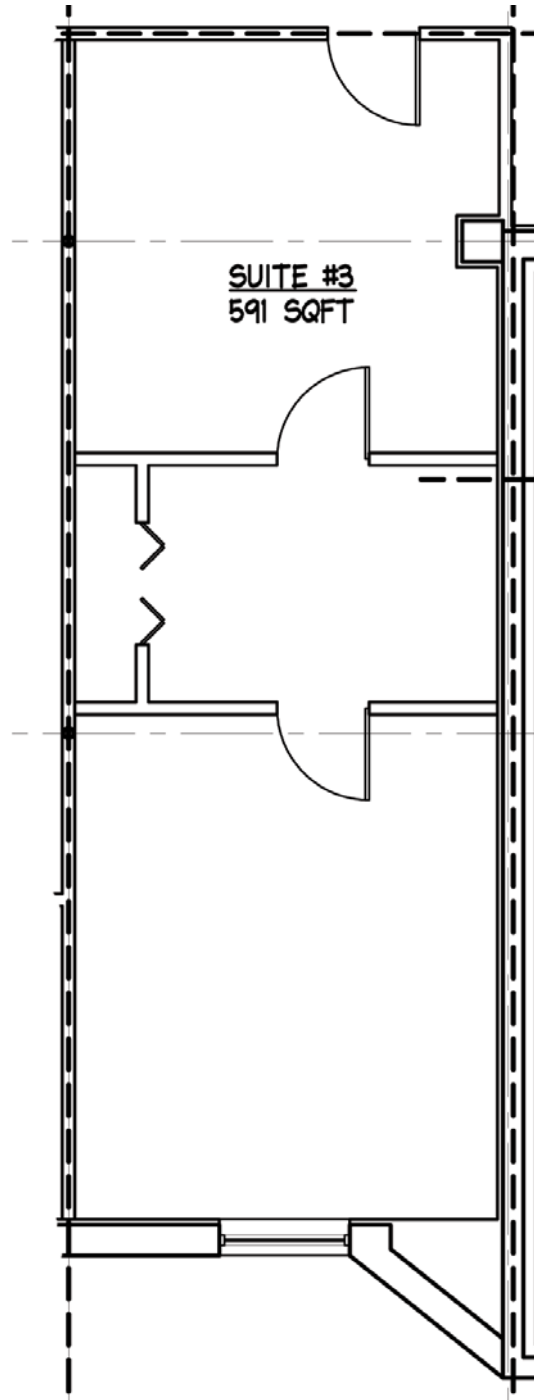
651 Route 73 North, Suite 111 • Marlton, NJ 08053 • Phone: (856) 985-9522 • Fax: (856) 985-9488



PROFESSIONAL OFFICE BUILDING FLOOR PLAN

1892 GREENTREE ROAD
CHERRY HILL, NJ

EXCLUSIVE LISTING





PROFESSIONAL OFFICE BUILDING
FLOOR PLAN

1892 GREENTREE ROAD
CHERRY HILL, NJ

EXCLUSIVE LISTING

